



Courtyard by Marriott Nagoya

Horikawa river was excavated for the construction of the Nagoya castle. Along the same river, Courtyard by Marriott Nagoya was born. Corresponding to the interior design, which abstractly reflects the Horikawa River, our concept of [REFLECT/NAGOYA] is a contemporary approach to re-collect the memory of Nagoya reflected on the Horikawa River.

With an art collection that expresses Loop/Reflection/Culture/Cityscape through its material selection, by reinterpreting 'Locality' in an abstract way, we pursued for an urban and sophisticated Courtyard brand.

Project Name

Courtyard by Marriott Nagoya

Opened

March, 2022

Owner

Yomiuri Shimbun Tokyo Headquarters

Interior Design

DOYLE COLLECTION co.,ltd



1F Reception Lobby:

REFLECT - Shading

Light and Shadows, Reflected on the Horikawa River

more impressive, more contemporary, more dramatic



1F Lobby Lounge:

REFLECT - Memory

Nagoya's History, Culture and People Reflected on the Horikawa River

more urban, more deeply, more localized



1F All Day Dining:

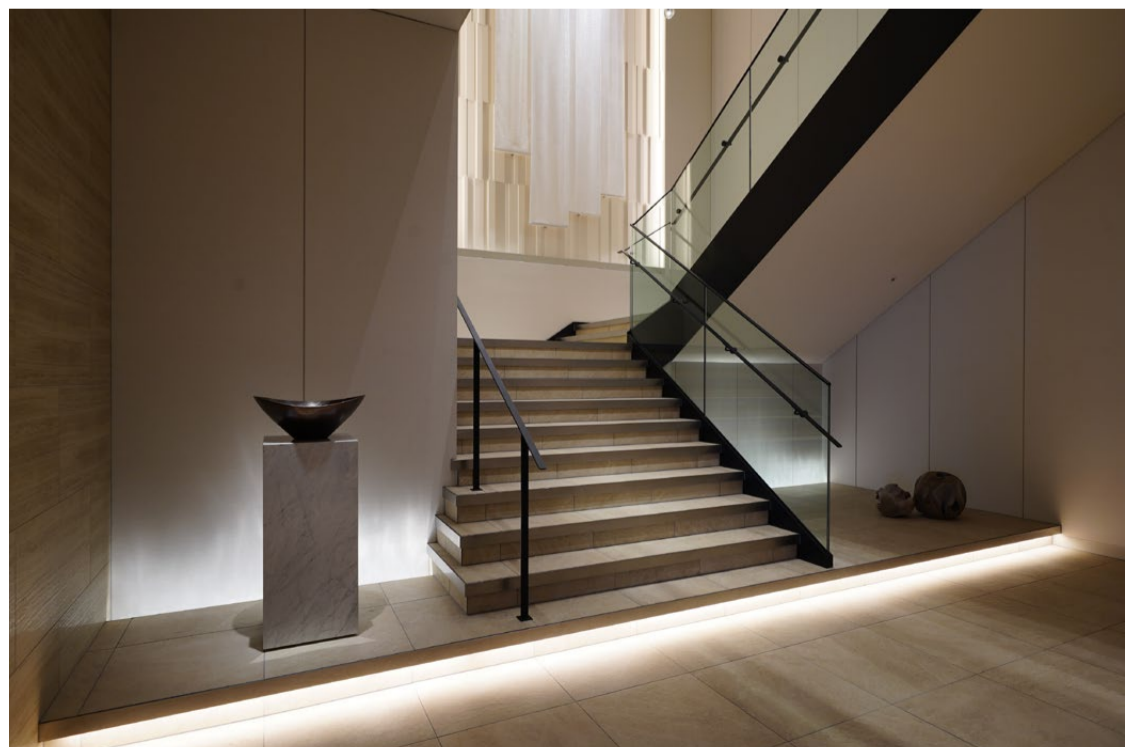
REFLECT - Courtyard

Refreshing Courtyard Filled with Light Along the Horikawa River

more fresh, more pale, more botanical



1F Elevator Hall / Staircase

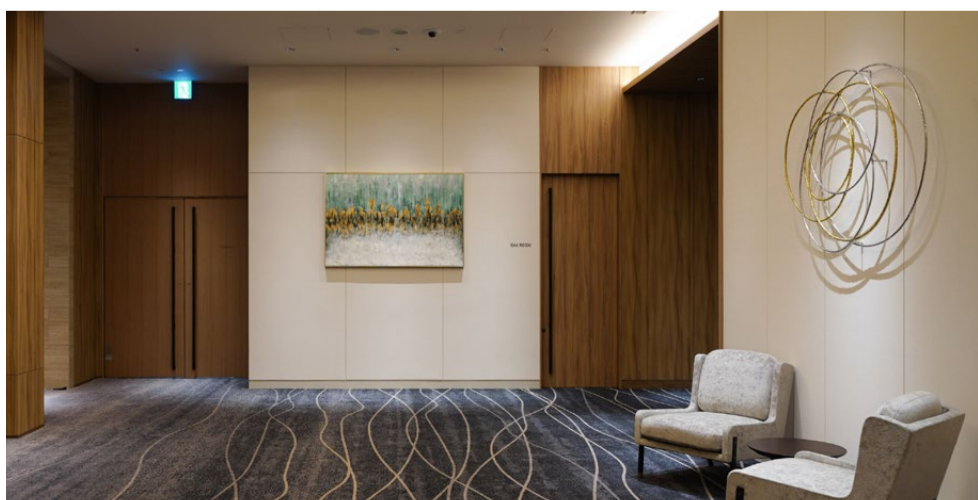


2F Pre Function:

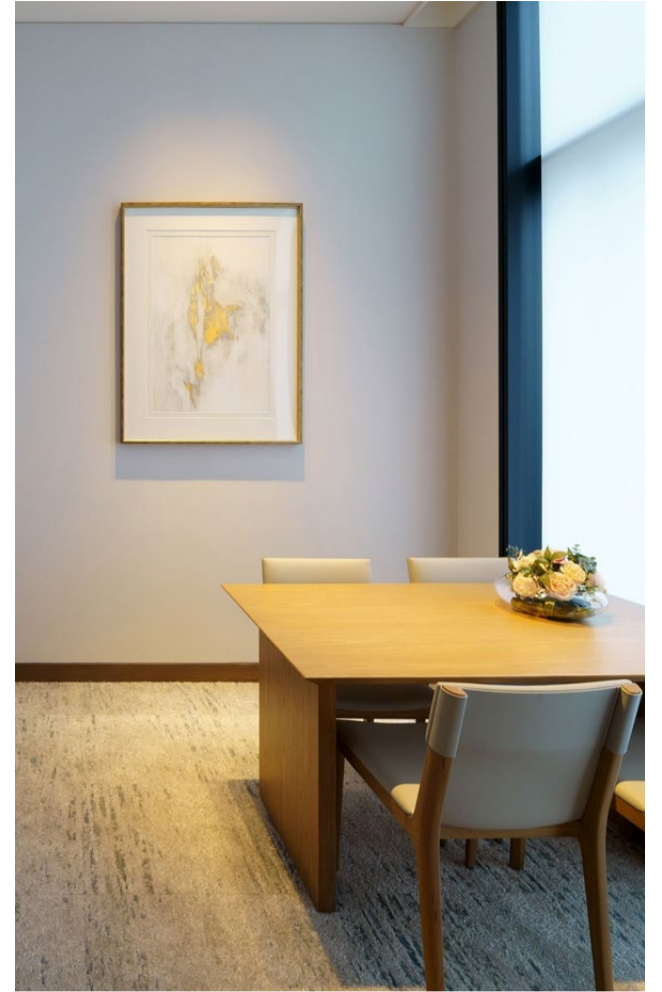
REFLECT - Dignity

History Carved into the Horikawa River, Timeless Elegance

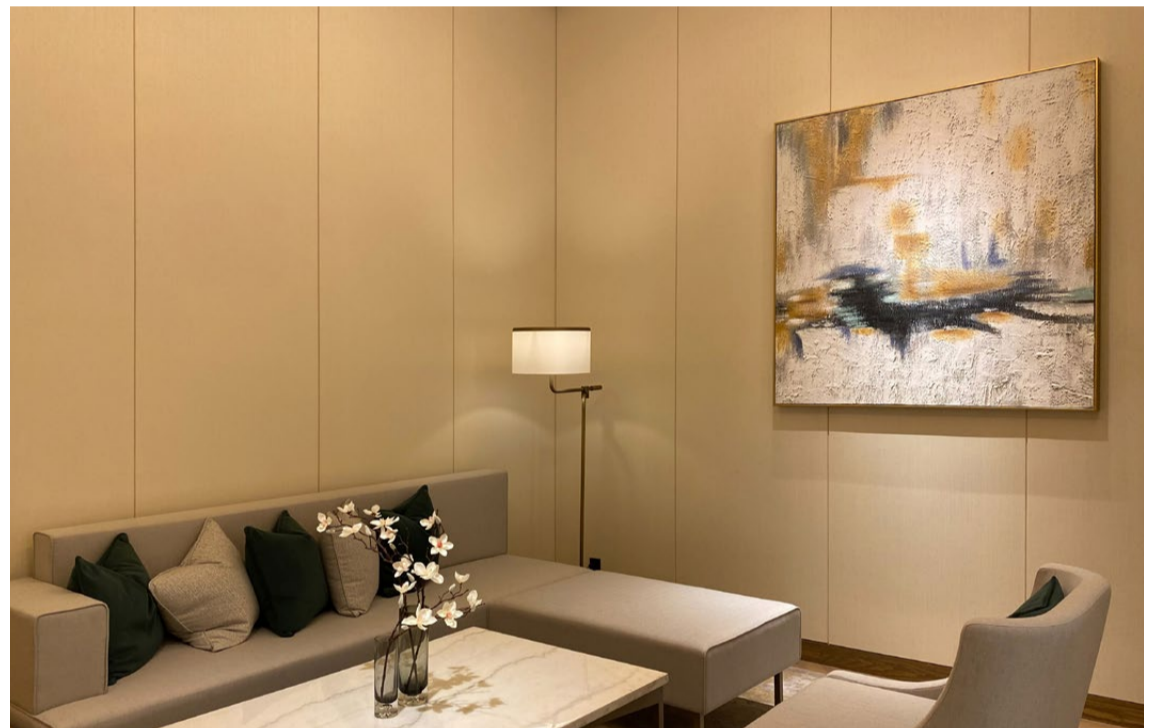
more elegant, more brilliant, more timeless



2F Banquet Showroom



Courtyard Suite



ICA

Interculture Art Inc.

ICA Bldg. 4F, 560-2 Waseda-Tsurumakicho,
Shinjuku-ku, Tokyo 162-0041

t: +81(0)3-3207-3911

e: contact@intercultureart.com

intercultureart.com

©Interculture Art Inc.