



Hilton Hiroshima

The magnificence of the Setouchi area is defined by its islands and the sea. Throughout the hotel, works by local artists, traditional crafts, and the characteristic Setouchi colors integrate to capture the unique beauty of these coexisting elements of nature.

Project Name
HiltonHiroshima

Opened
September, 2022

Owner
SETOUCHI BRAND CORPORATION.

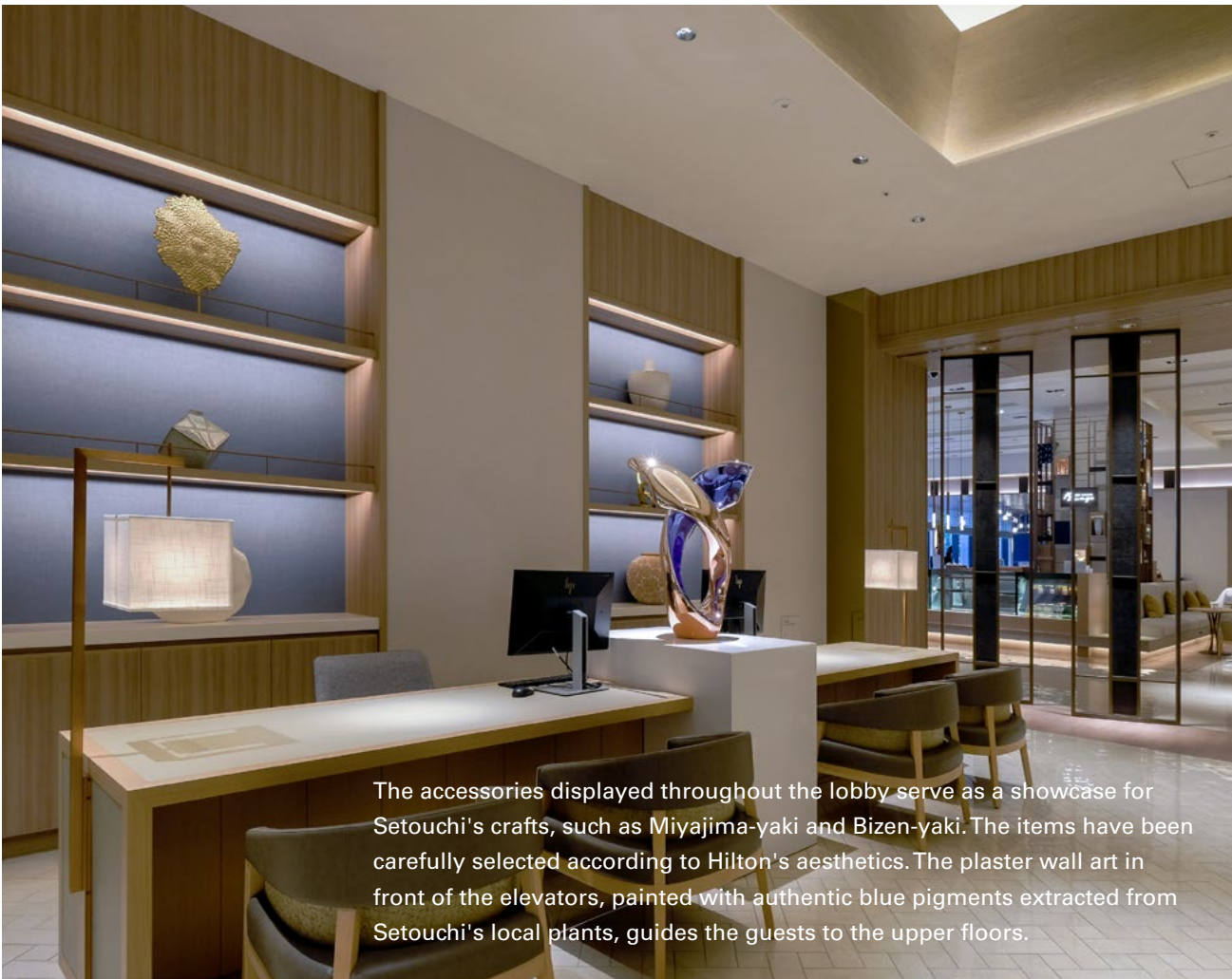
Interior Design
Hirsch Bedner Associates



L1: Grand Lobby

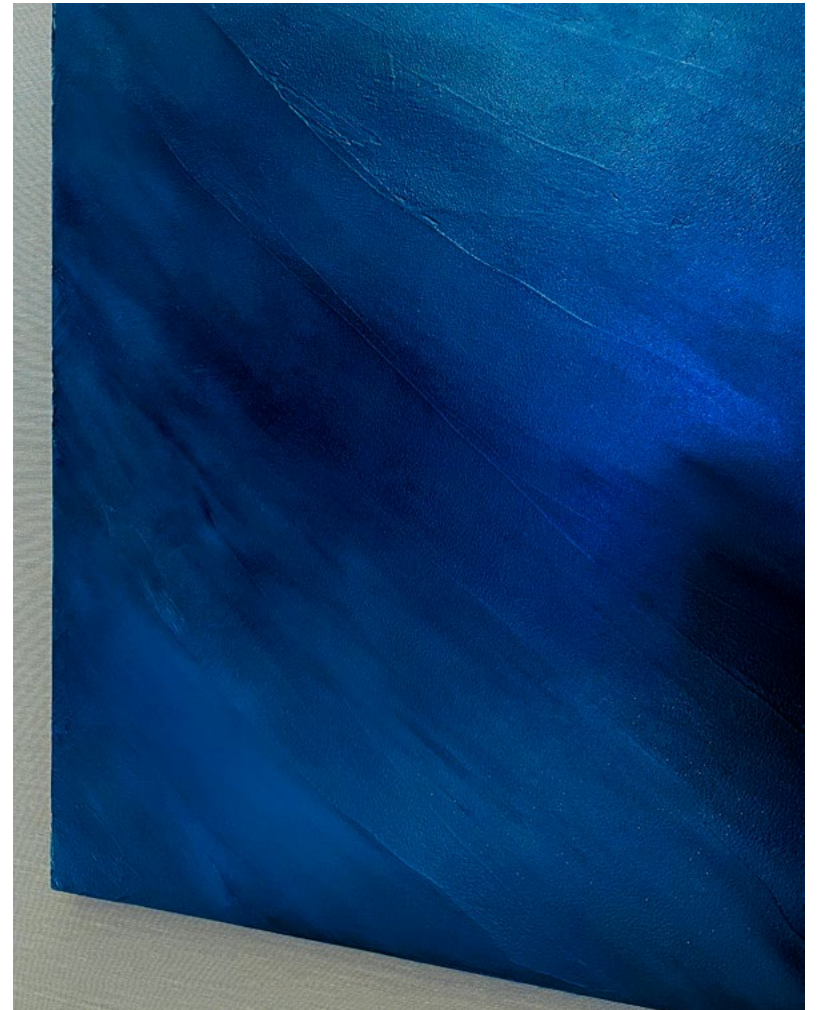
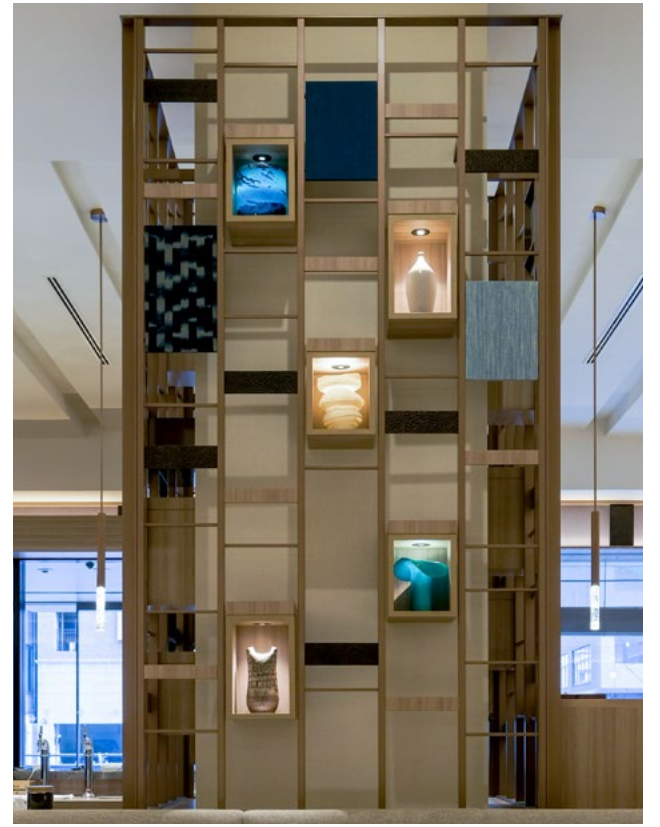


As you walk through the main entrance, the first thing to catch your eye is an 8-meter-wide three-dimensional relief. The design refers to the aerial view of the Seto Inland Sea area centered on Miyajima and Itsukushima Shrine, showcasing the beauty of Setouchi islands and sea. The mountains, including Miyajima, are faithfully represented in the design by tracing the lines taken from a geographic 3D model. Look closely, and you can see oyster rafts floating in Hiroshima Bay. Please find them when you visit.



The accessories displayed throughout the lobby serve as a showcase for Setouchi's crafts, such as Miyajima-yaki and Bizen-yaki. The items have been carefully selected according to Hilton's aesthetics. The plaster wall art in front of the elevators, painted with authentic blue pigments extracted from Setouchi's local plants, guides the guests to the upper floors.

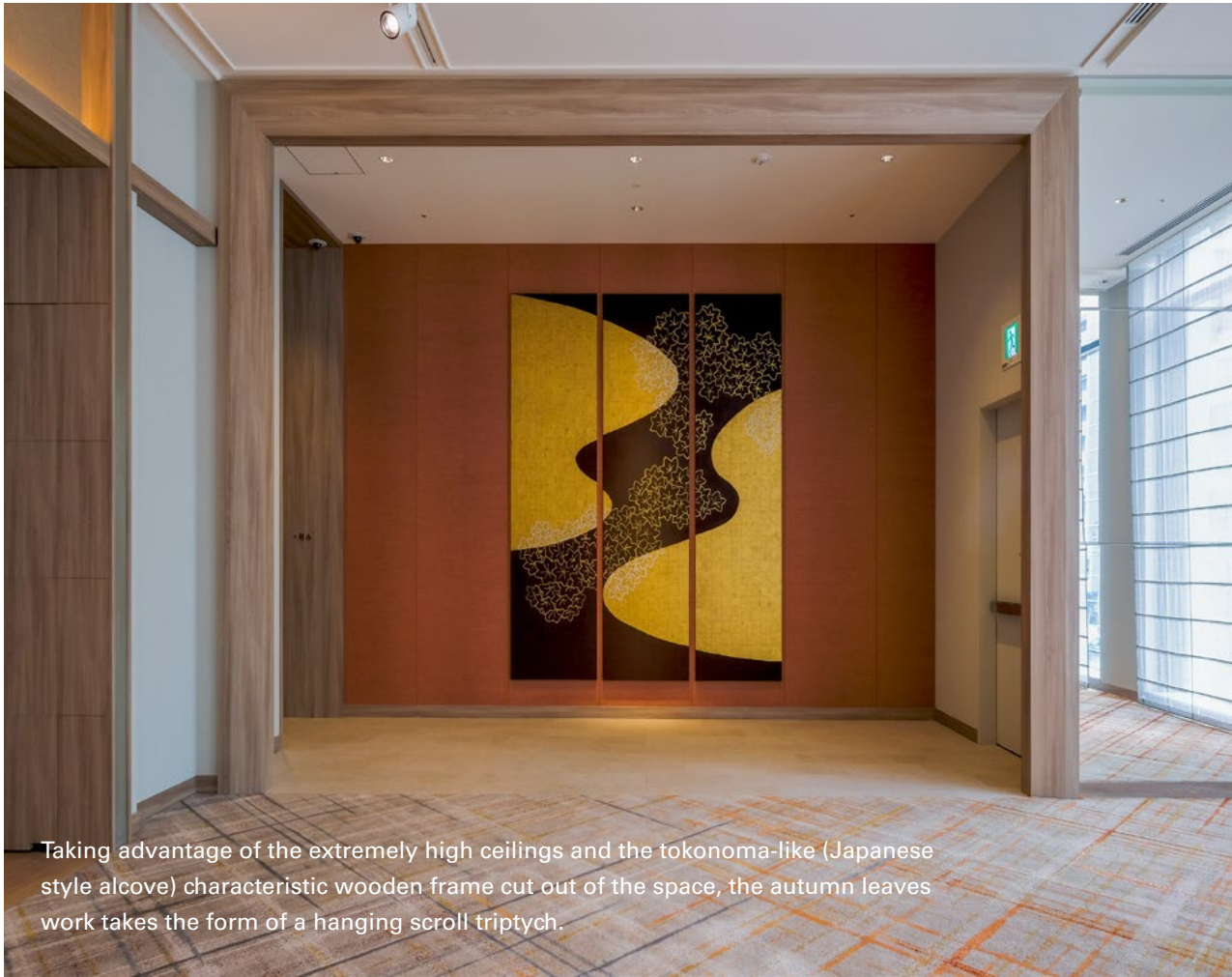




L2, L3: Banquet Floors

With the motif of the interior design being the Japanese scenery of carp swimming at the Rijo castle, and subsequently the names of the banquet and conference rooms taken from the rivers of Hiroshima, we placed a Japanese painting of swimming carp at its center. The red color of autumn leaves at Rijo to its left and the blue of the flowing river to its right recreate a beautiful Japanese landscape.

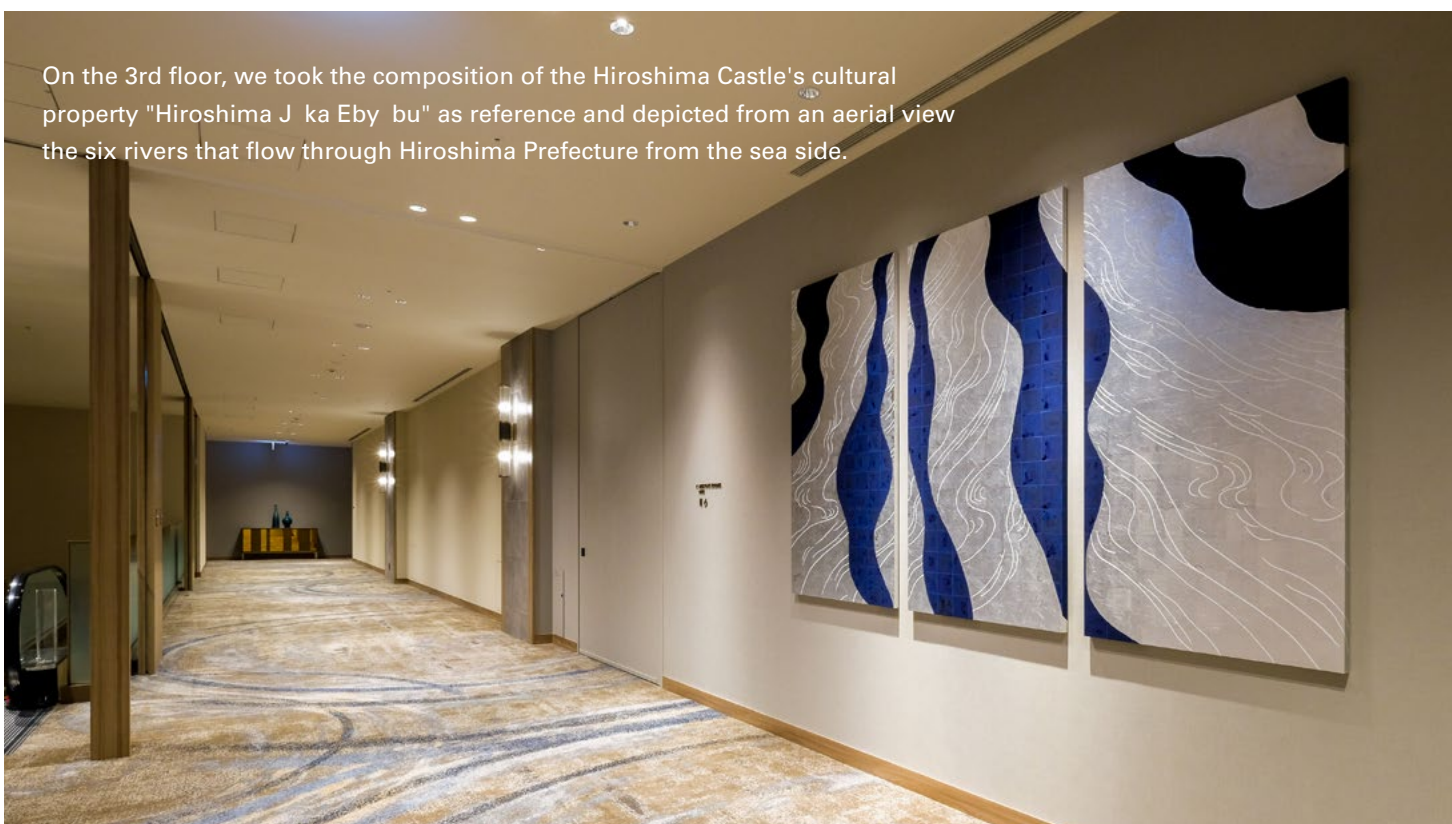




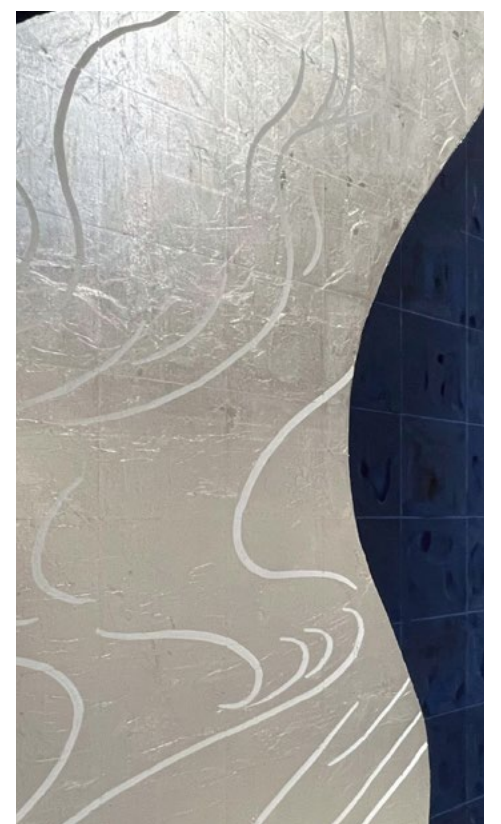
Taking advantage of the extremely high ceilings and the tokonoma-like (Japanese style alcove) characteristic wooden frame cut out of the space, the autumn leaves work takes the form of a hanging scroll triptych.



The blue two-piece work, utilizes a traditional dyeing method called katazome, characterized for its somewhat folk art-like texture, intends to convey to guests a Japanese sense of space, color and the beauty of craftsmanship.



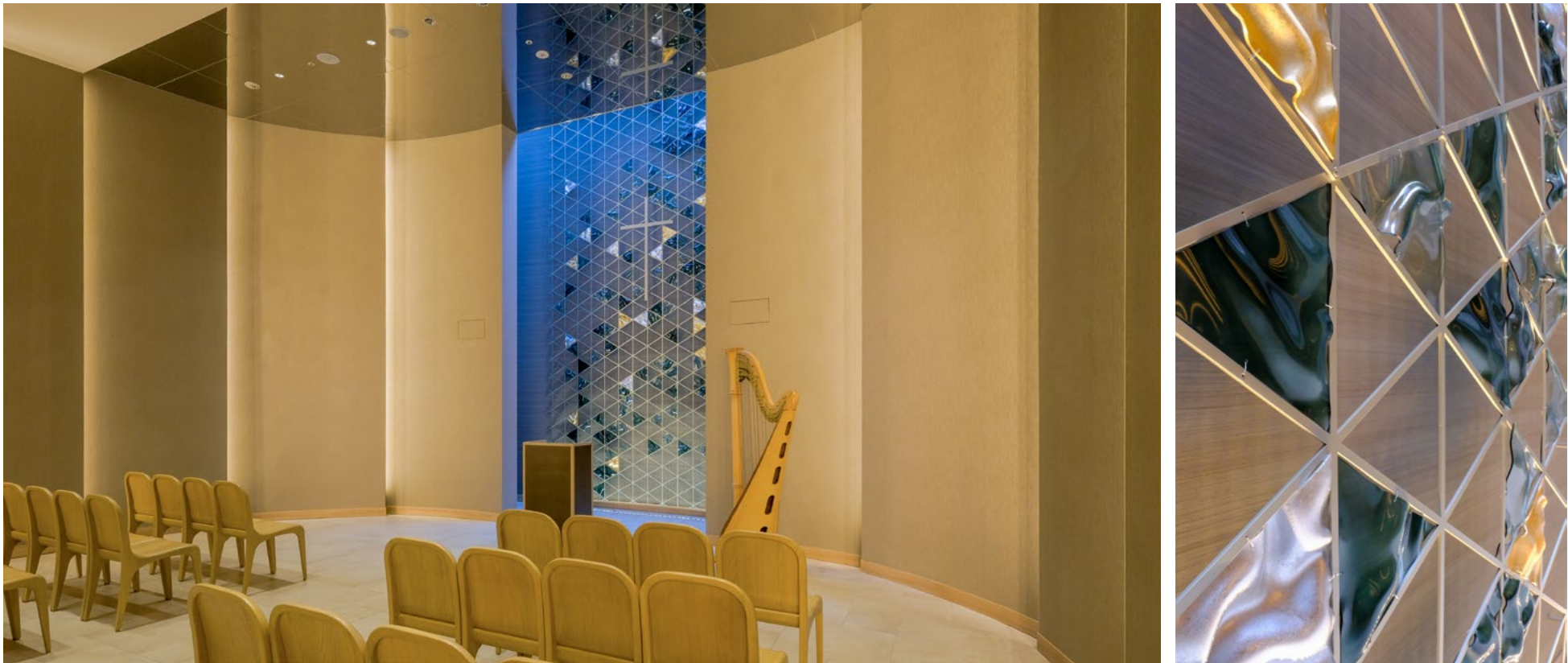
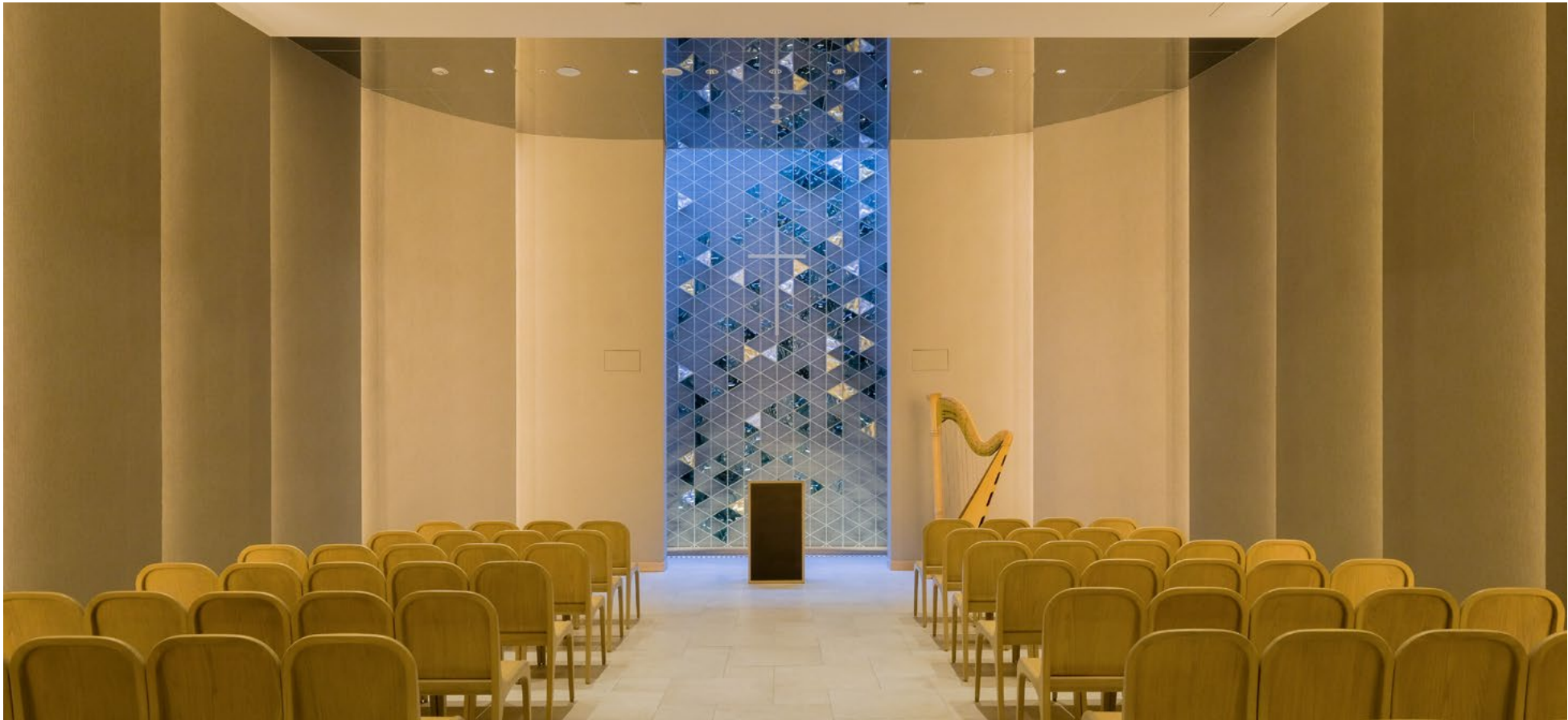
On the 3rd floor, we took the composition of the Hiroshima Castle's cultural property "Hiroshima J ka Eby bu" as reference and depicted from an aerial view the six rivers that flow through Hiroshima Prefecture from the sea side.

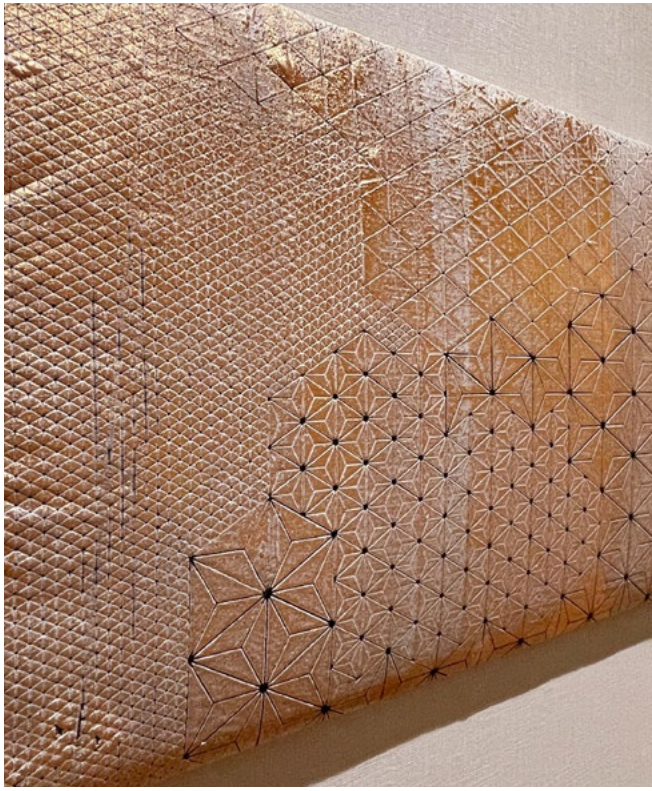
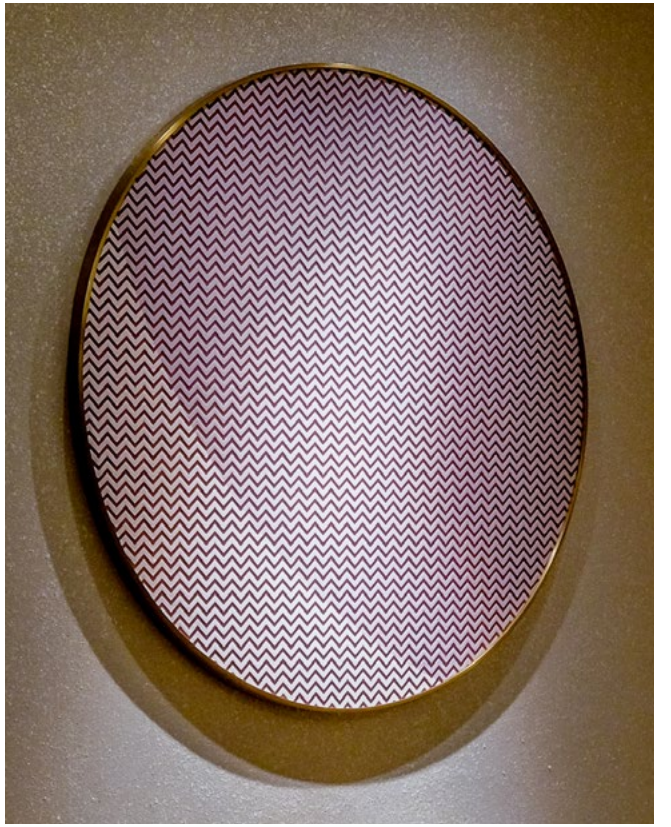




L4: Chapel

The concept of the space is the sound of a resounding Koto (Japanese zither). The art screen in the front of the chapel is based on the design of the "hemp-shaped engraving" on the back of the Fukuyama koto, a traditional craft of Hiroshima Prefecture. The design and installation of approximately 150 acrylic pieces were designed as if they were elevating to the sky, with the image of the sound of the koto echoing throughout the space. The gold and silver pieces were individually handcrafted by a local foil stamping company in Hiroshima. The "Ayasugi engraving" and "hemp-shaped engraving" of the Fukuyama koto are also hidden outside the chapel space. Look for the sound of the koto echoing throughout the floor!





L5: Spa

The Spa area is based on the different reds found in Miyajima: the red of Itsukushima Shrine reflected on the surface of the sea as the tide changes, the red of Itsukushima Shrine transitioning through day and night, and the red of Daisho-in Temple at Miyajima, where autumn leaves spread in a whirling patterns. We recreate the beauty of colors that changes through time in an artistic form.

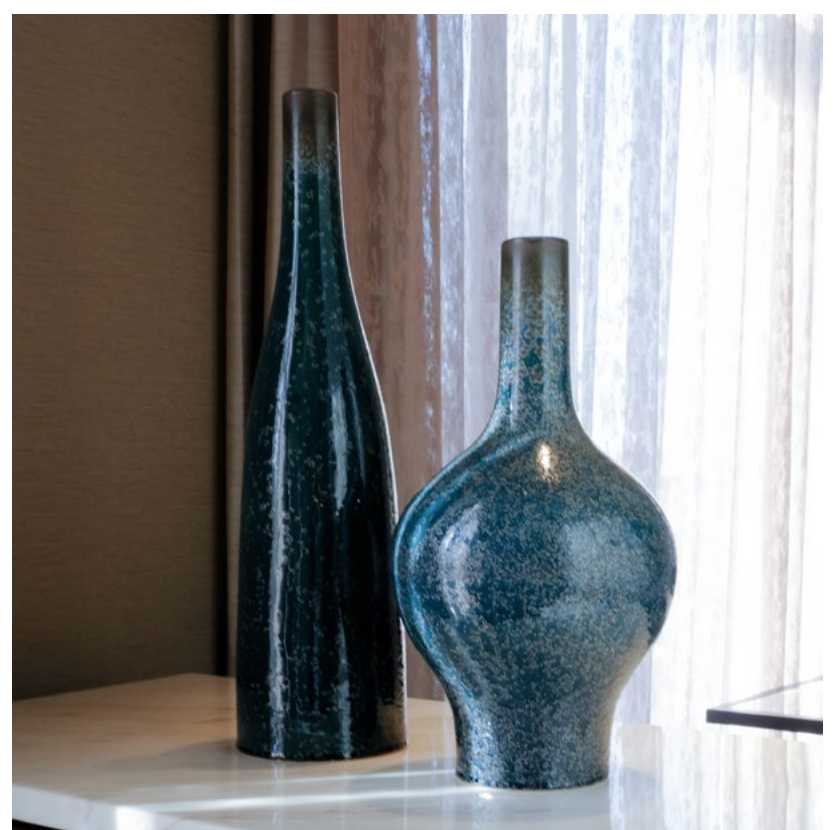
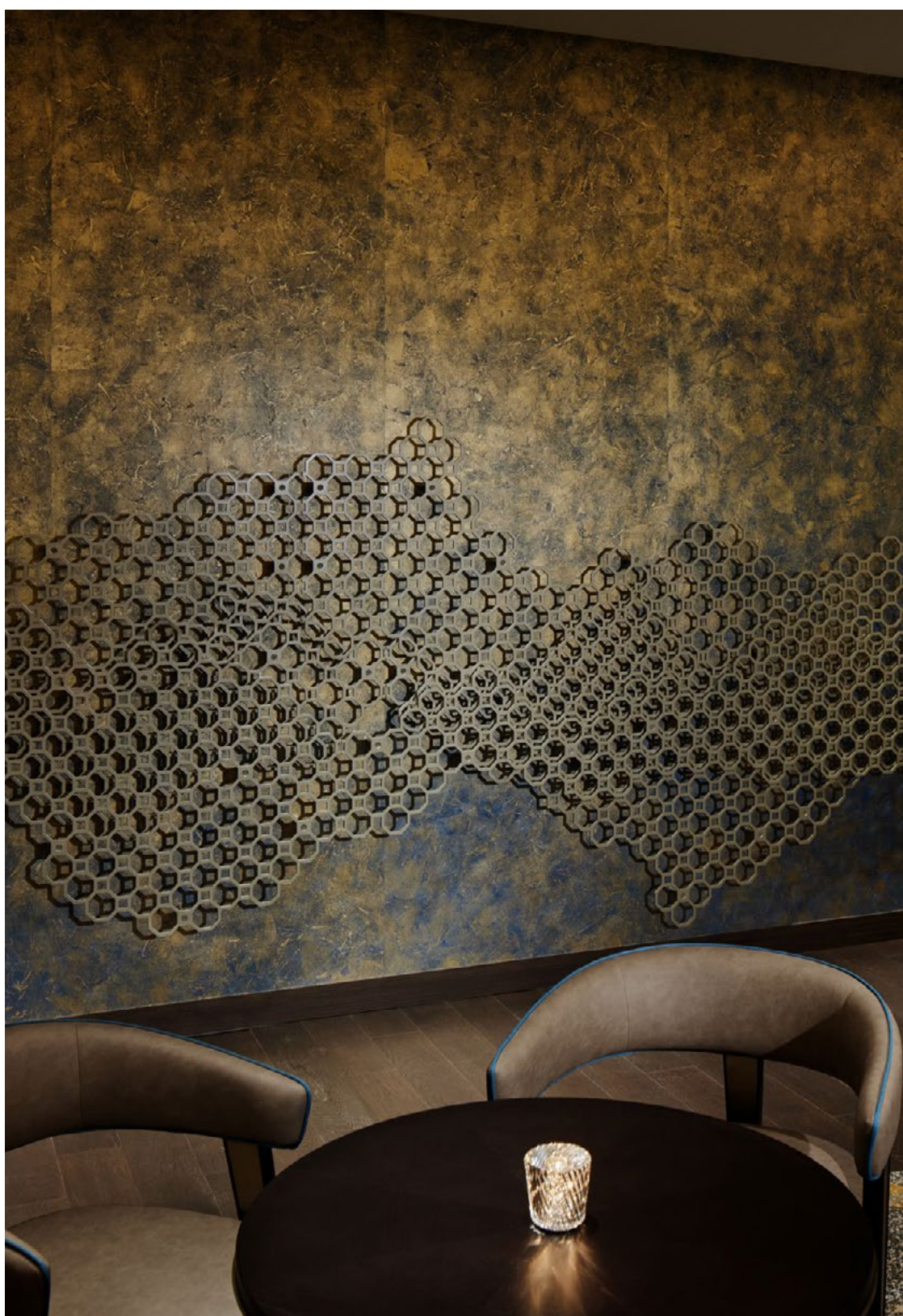


L6: Restaurant and Bar

Upon entering the restaurant, the first thing you see is a metal screen boldly cut out in the shape of waves. Like the textile hanging from the ceiling, the screen traces the ripples of the Naruto Straits, creating a watery, open feeling. With the restaurant sign in front, the "red world" of Japanese cuisine on the left and the "blue world" of Western kitchen on the right, the spatial concept is expressed by the contrast of autumn leaves, the sea, and colors.

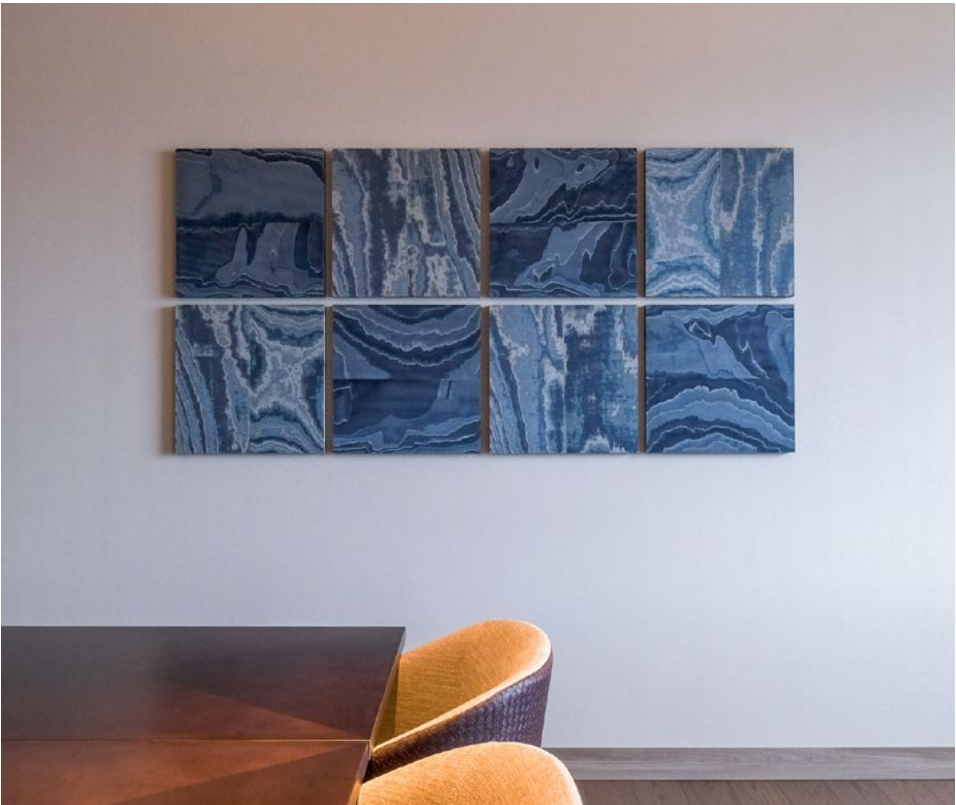






L22: Club Lounge

The Club Lounge on the 22nd floor features a homelike display of Setouchi crafts and a collection of kitchenware. We hope you will enjoy a relaxing time while overlooking the ocean through the windows.



Guestroom



ICA

Interculture Art Inc.

ICA Bldg. 4F, 560-2 Waseda
-Tsurumakicho,
Shinjuku-ku, Tokyo 162-0041

t: +81(0)3-3207-3911

e: contact@intercultureart.com

intercultureart.com

©Interculture Art Inc.