

DoubleTree by Hilton Toyama



1F Lobby: The artwork represents the bubbles, reflections, and transparency of the waters of Toyama Bay.

As the first Hilton Hotel in the Hokuriku area, Doubletree by Hilton Toyama stands at the heart of Toyama's scenic beauty: surrounded by the sea of Japan and the Tateyama Mountains. The artwork theme gradually shifts from water to mountain as you move up from the ground floor to the upper level, introducing the local beauty to guests through those artworks.

Name
DoubleTree by Hilton Toyama

Open
Jan 2023

Owner
Ikeda Hotel Management Co., Ltd.

Interior Designer
MEC Design International Corp.

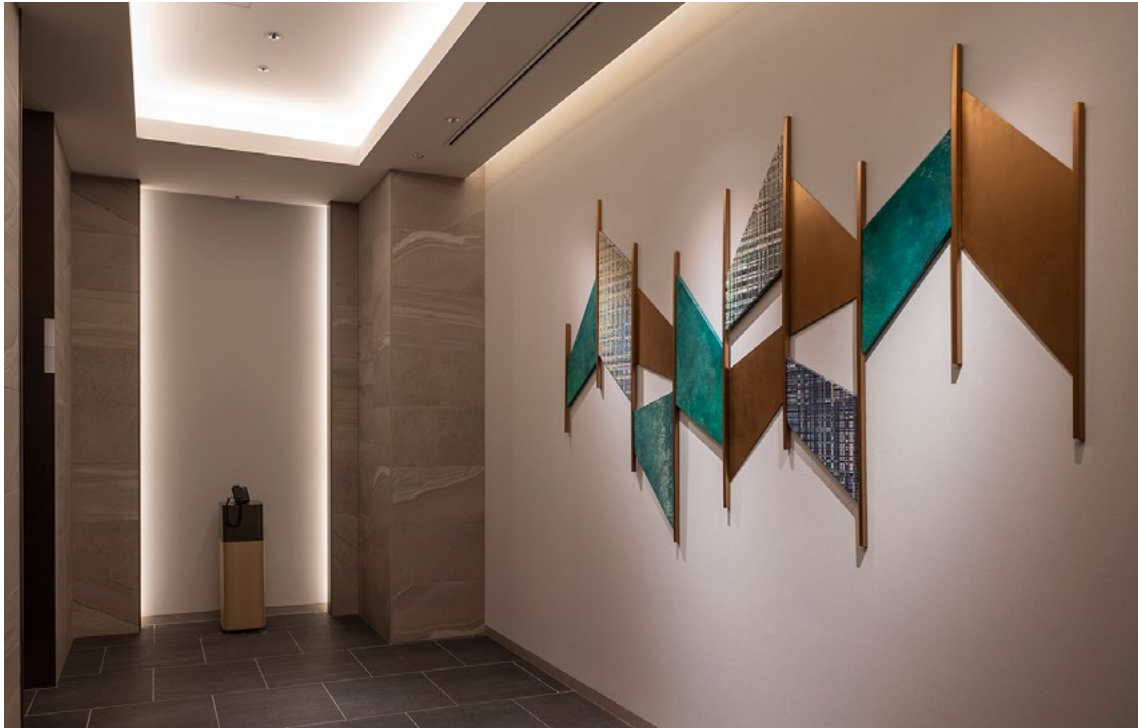




1F Lift Lobby: The area connects the ground floor, which depicts Toyama Bay, to the second floor, which represents the Tateyama Mountains. The gold color captures the silhouette of the mountain range, whereas the blue illustrates the coast of the bay.



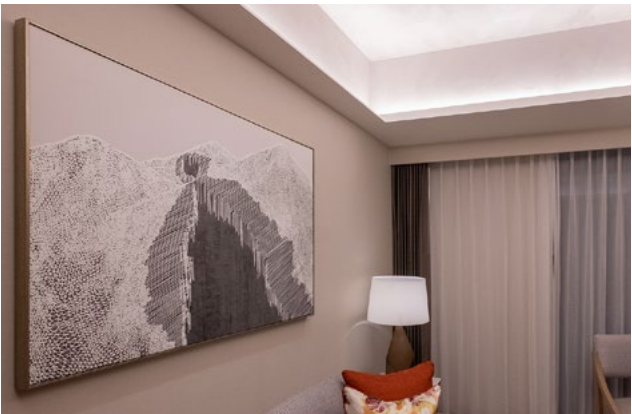
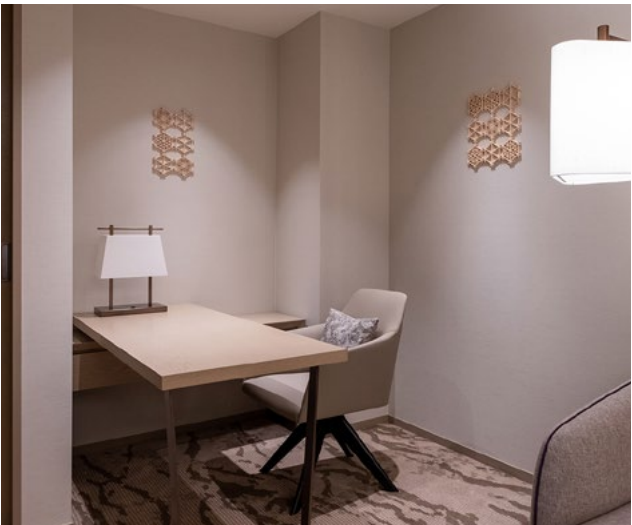
2F All Day Dining: Here the artwork captures the sea-to-mountain scenery of Toyama as it changes with time. of the mountain range, whereas the blue illustrates the coast of the bay.



3F Multi Function / 4F Spa: Using colors that represent the valleys of Toyama, the motif of drops and melting snow migrates beautifully into the artwork.



-13F Guest Room: With triangular motifs, trees, and snow crystals in the design, the artwork captures the beauty of the Tateyama Mountains.



Villa Fontaine Premier / Grand Haneda Airport



ICA completed art consulting and art installation for the Villa Fontaine Premier Grand Haneda Airport, a hotel that is directly accessible from the 3rd terminal of the Haneda international airport. This project is themed to showcase a city of lights, changing colors of seasons, craftsmanship as to represent a 'welcome gate' to Japan. The art for guest rooms highlights the nightscape of the city, the moon, and stars as a metaphor for an aerial view from an airplane's window.

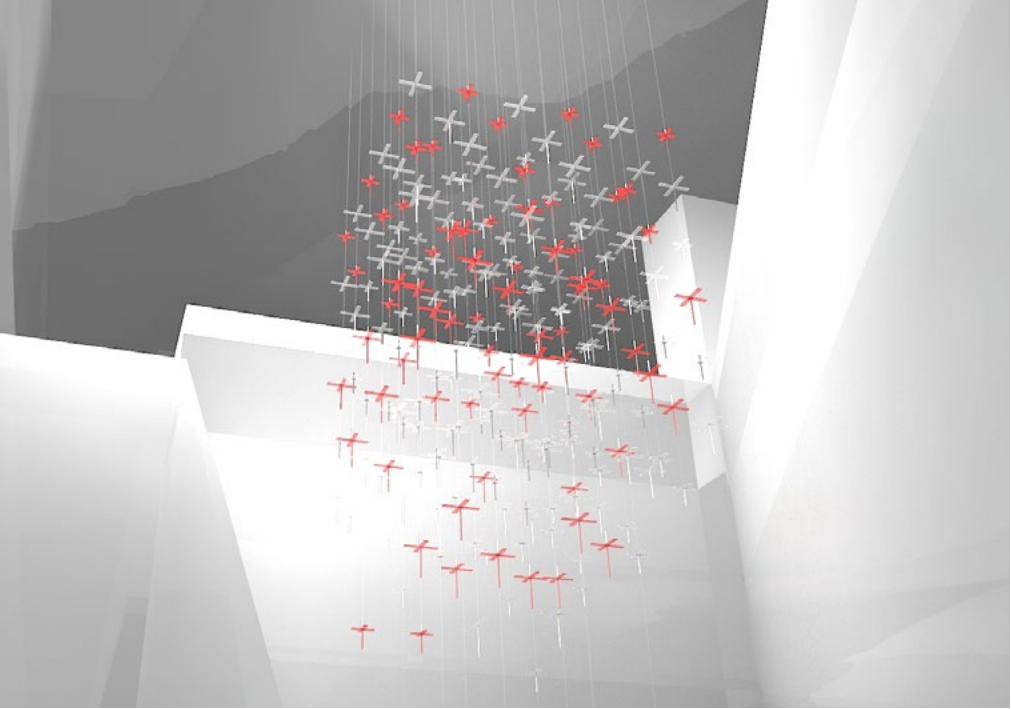
Name
Villa Fontaine Premier / Grand Haneda Airport

Open
Dec 2022

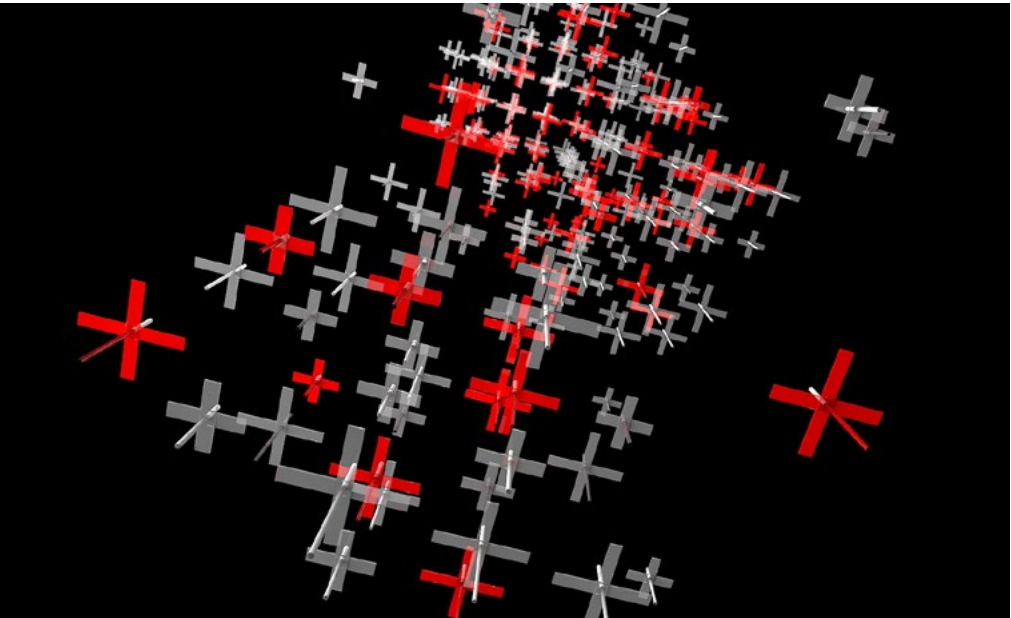
Owner
Sumitomo Fudosan Villa Fontaine

Interior Designer
Nikken Space Design Ltd.

1F Lobby: Hanging art uses the motif of the bamboo dragonfly or "Taketombo," a traditional Japanese toy. The dynamics of flight condensed into this ultimately simple form. The countless taketombo soaring in the crimson sky carry our thoughts, eventually evolving into a jet plane.



↑↓ AutoCAD Simulation

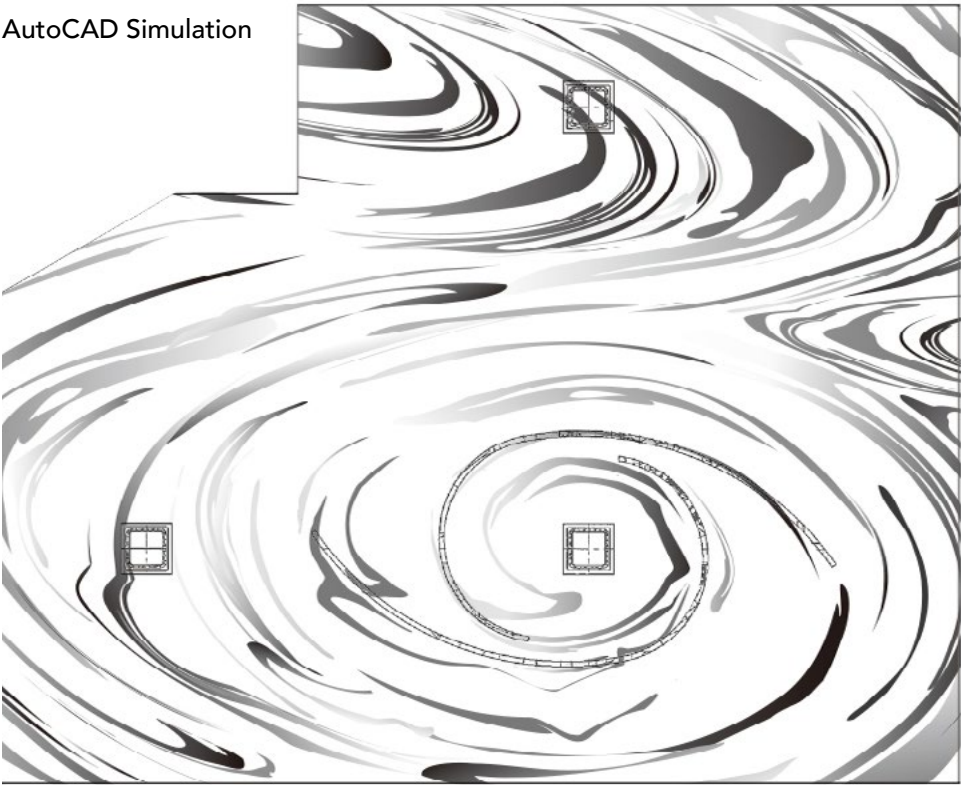


1F All Day Dining:

We decorated the entire ceiling with the graphic art of “Hana-ikada,” which means petals of cherry blossoms gracefully dancing with the river flow.



AutoCAD Simulation



We abstractly expressed the resplendence of the city through the brilliance of stainless steel.



Pubric Space and Guest Room



ICA

Interculture Art Inc.

ICA Bldg. 4F, 560-2 Waseda-Tsurumakicho,
Shinjuku-ku, Tokyo 162-0041

t: +81(0)3-3207-3911

e: contact@intercultureart.com

intercultureart.com

©Interculture Art Inc.

