



Interculture Art – ICA Newsletter - vol.3 2025

Fairmont Tokyo



2025/7

© Interculture Art Inc.
All Rights Reserved.



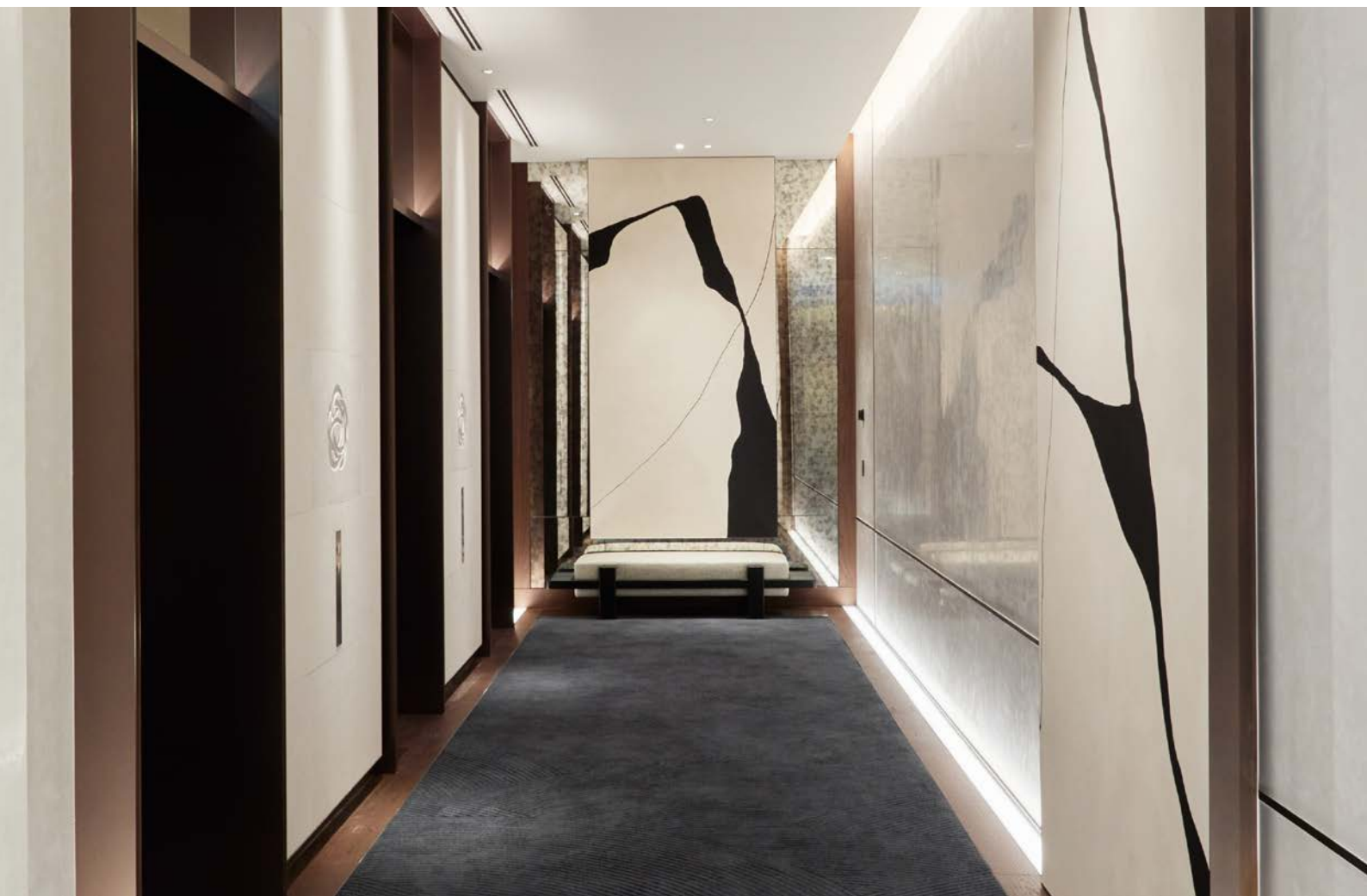
OVERVIEW

One of the defining aspects of Japanese culture is its perception of time—not as a linear sequence, but as a continuous overlap of past and present. The boundaries between old and new, tradition and innovation, reality and imagination are beautifully blurred. Inheriting Overlaps. This stunning masterpiece harmonizes the energy of the city center with the serenity of the bay. It is a superlative place where sky, sea, and skyline converge in breathtaking harmony. As the first launched Fairmont in Japan, Fairmont Tokyo offers guests the chance to experience a curated collection of traditional and modern art—bridging Japanese aesthetics with luxurious indulgence.



1F Arrival Lobby

The Arrival area warmly welcomes guests with abstract and dynamic artworks: the striking texture and colors of objects evokes modern sensibility rooted in Shibaura.





2F Arrival Lobby

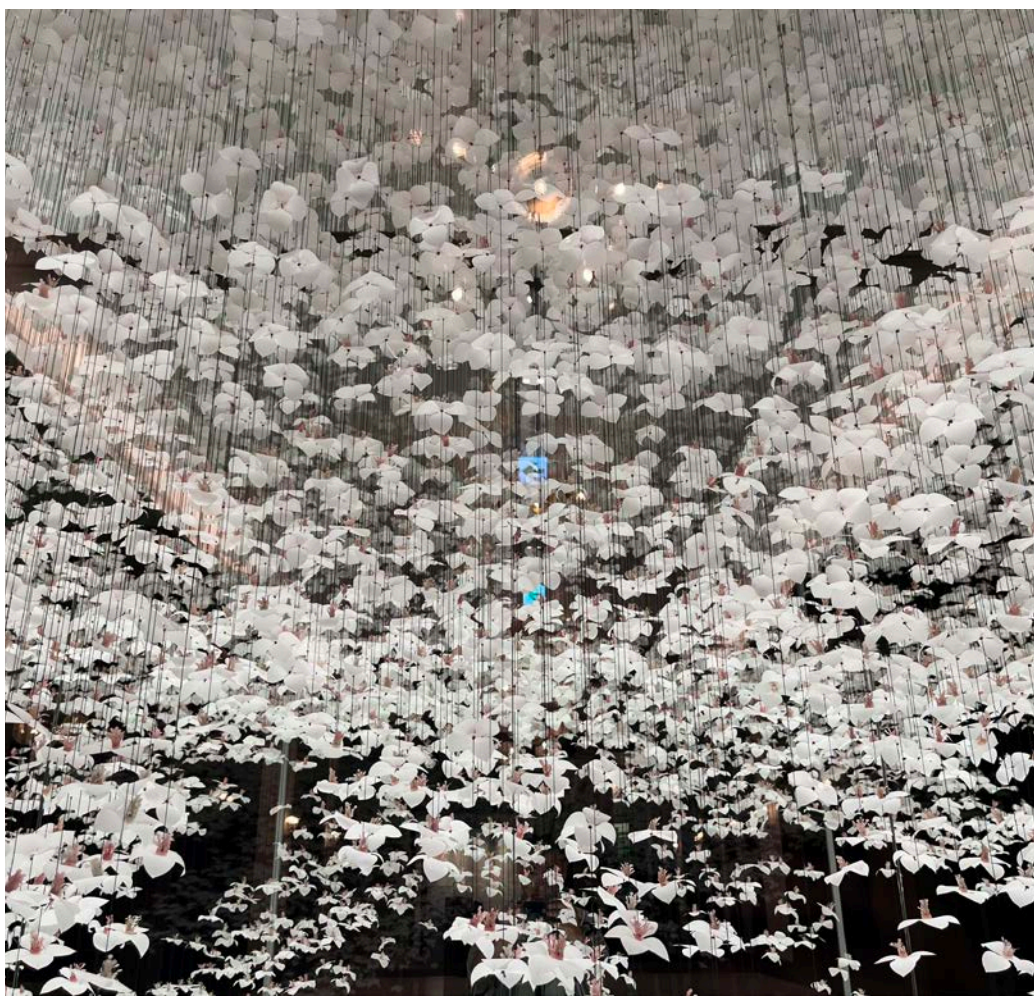
Elevator

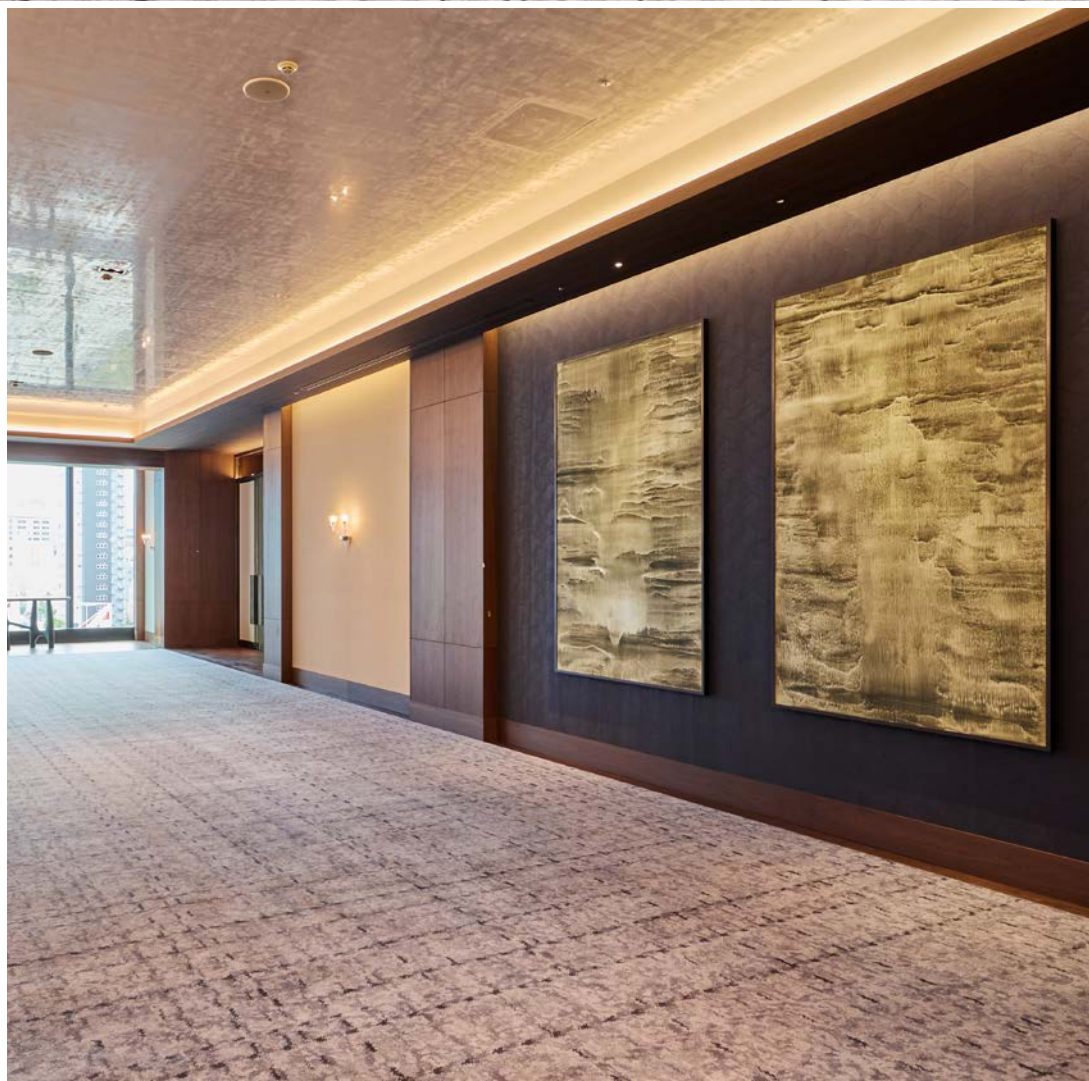


4F Banquet Area

A three-dimensional paper installation inspired by blooming dogwood trees captures the ephemeral beauty of spring. A large-scale artwork depicting the changing sea waving with unique strokes. The land and quiet water surface in Shibaura adorned by blooming flowers. Its organic forms bring a sense of poetic elegance to the space.

Countless delicate, hand-crafted flowers come together to form a single dogwood tree. This intricate and dynamic paper installation was created by Wanda Barcelona — a renowned studio based in Barcelona, known for designing boutiques for some of the world's most prestigious luxury brands. Masters of traditional paper artistry, Wanda Barcelona brings to life a truly one-of-a-kind world.





An oil painting on sandpaper evokes the tranquil sea of Shibaura. A monumental original painting by Matteo Montani, powerfully rendered with bold, distinctive strokes.



Vibrant watercolor works by Shino Hirata give breath of lives into the banquet and meeting rooms.





35F Reception Lobby

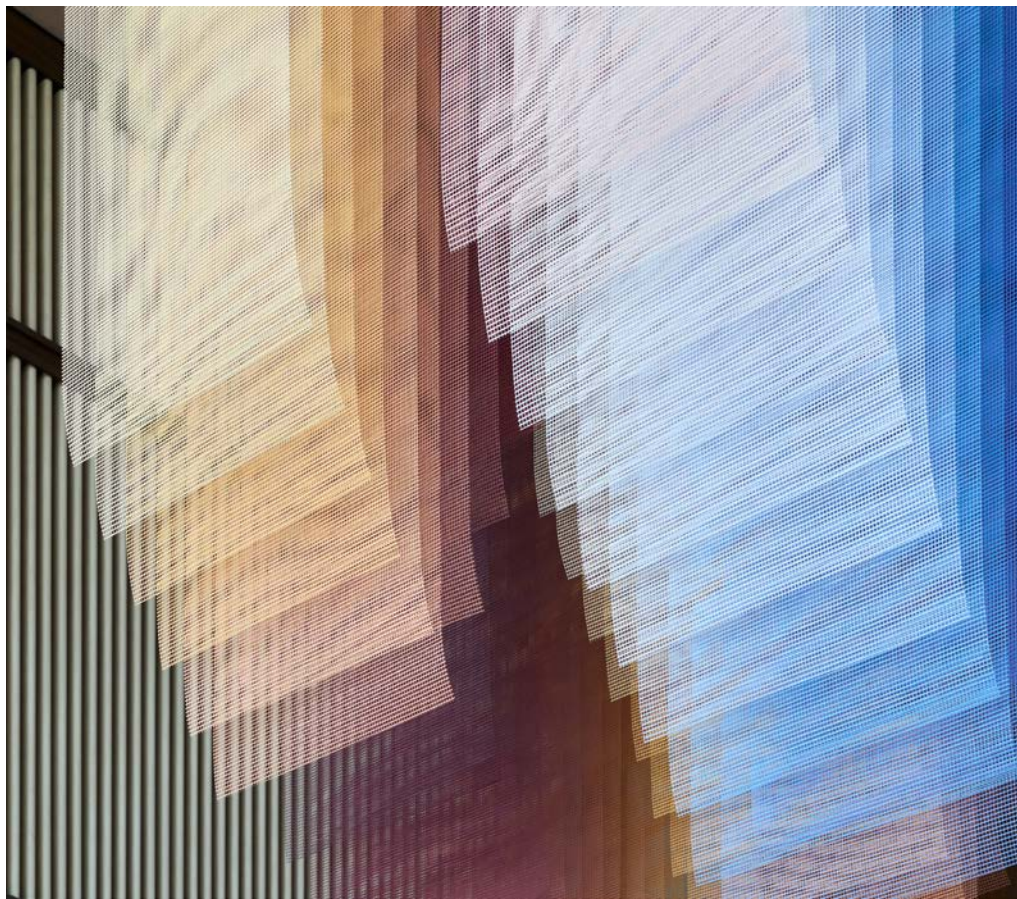
The reception area presents serene views of the waterfront, depicted in the ukiyo-e painting “Shibaura Seiran” from the Eight Views of Edo. The artwork, expressed in various materials that echo the scenery, invites guests to enjoy the scenery with a sense of tranquility.



“My work and its colors must reach deep into the viewer’s mind, stir emotion, and awaken a sense of the power of color. Seeing colors is something we take for granted, but to me, it’s a mysterious and wondrous surprise.”

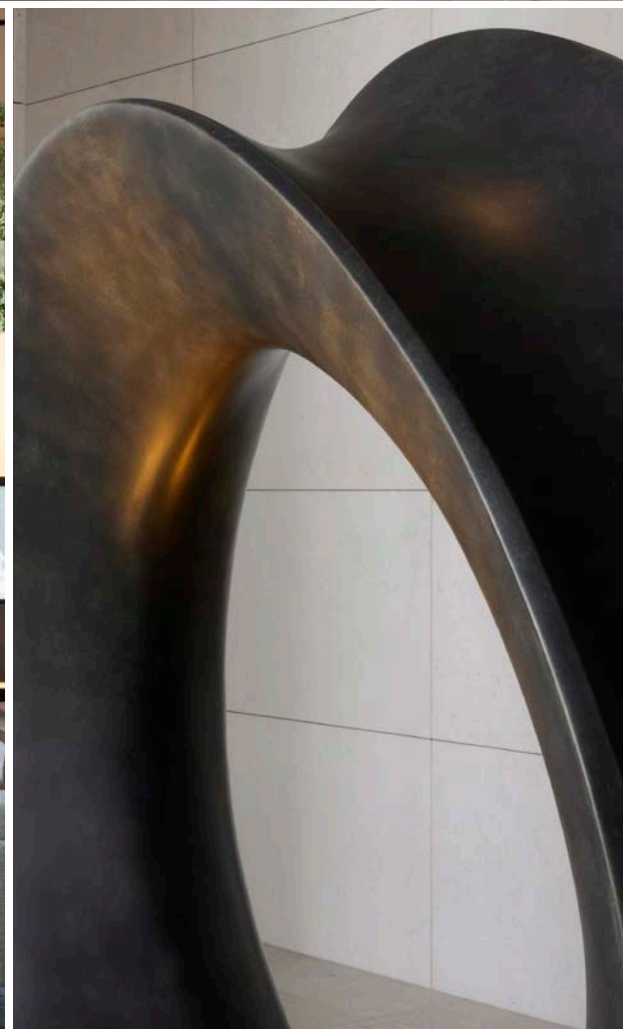
— Tomislav Topic

Layers of mesh, subtle color gradients, and delicately integrated installations blend seamlessly with the stunning landscape and open sky, creating a moment of quiet elegance at Fairmont Tokyo.





A sculpture by Mari Ruth Oda, a Japanese artist based in North Wales. The large ring symbolizes a continuous thread connecting all events — past, present, and future.





“Unoustique” — the world’s oldest painting technique, using beeswax. The oil paintings of Moe Nakase, a Tokyo-based artist. Her works gently embrace Fairmont Tokyo’s reception area, appearing to float between sky and sea.



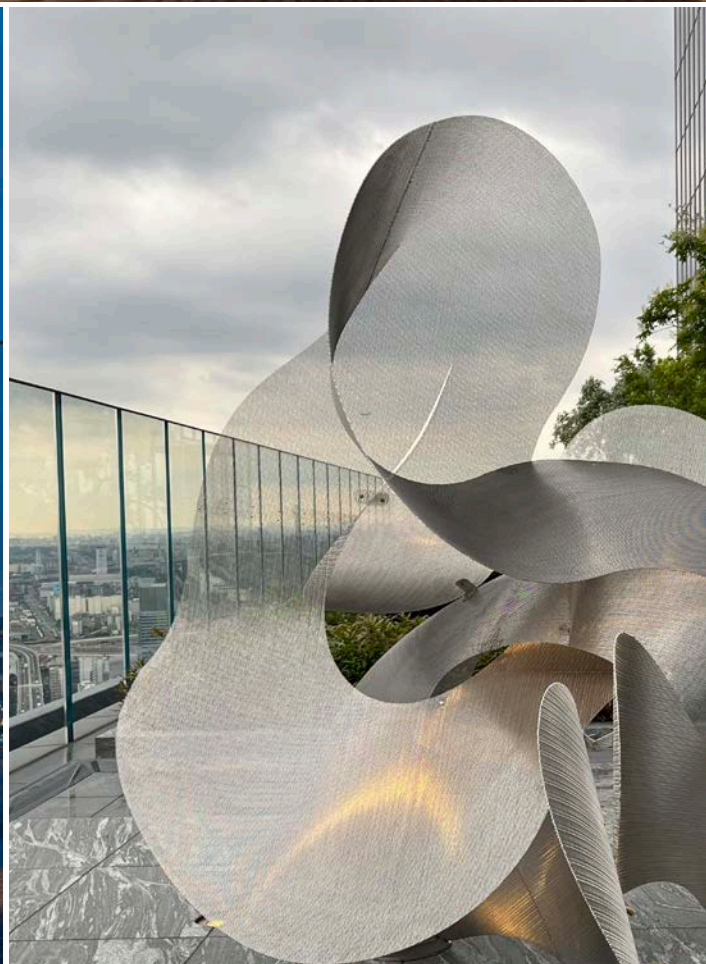




35F Terrace

In between sky and sea, — we see the organic forms floating atop a water basin, the shapes and composition reaching upward as if soaring toward the sky. Their curves evoke the rhythm of dancing waves, petals falling gently on the surface, or a waterbird standing still at the water's edge.

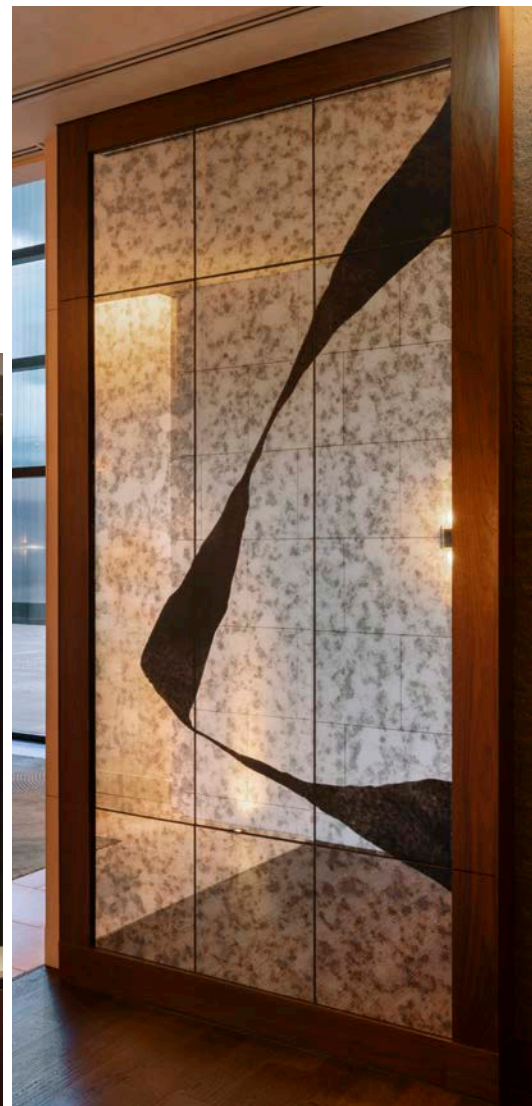






35F All Day Dining

The graphics on the walls and kitchen hood are the work of Alicia Gimeno, a Spain-based female artist. Inspired by the art of kintsugi, her designs flow through mirrors, fabrics, and kitchen features—gently accompanying guests as they move through the space.



35F Spa

Glass, silver leaf, light, and water come together in harmony. An abstract ink painting themed on “connecting water” reflects the concept of the spa area, which celebrates the blessings of water.

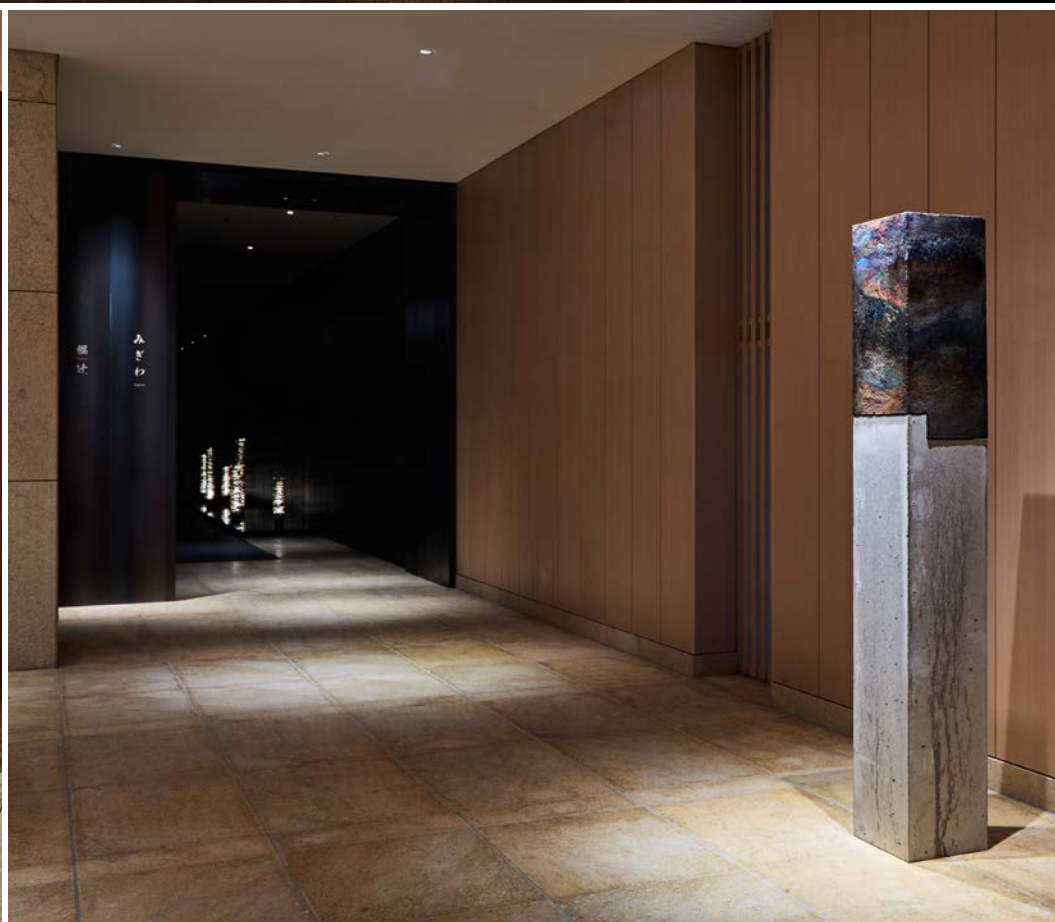






36F Japanese Restaurants

An ode to the original landscape of Shibaura. Artworks crafted from a variety of tactile materials reflect a harmony between traditional textures and contemporary sensibilities.

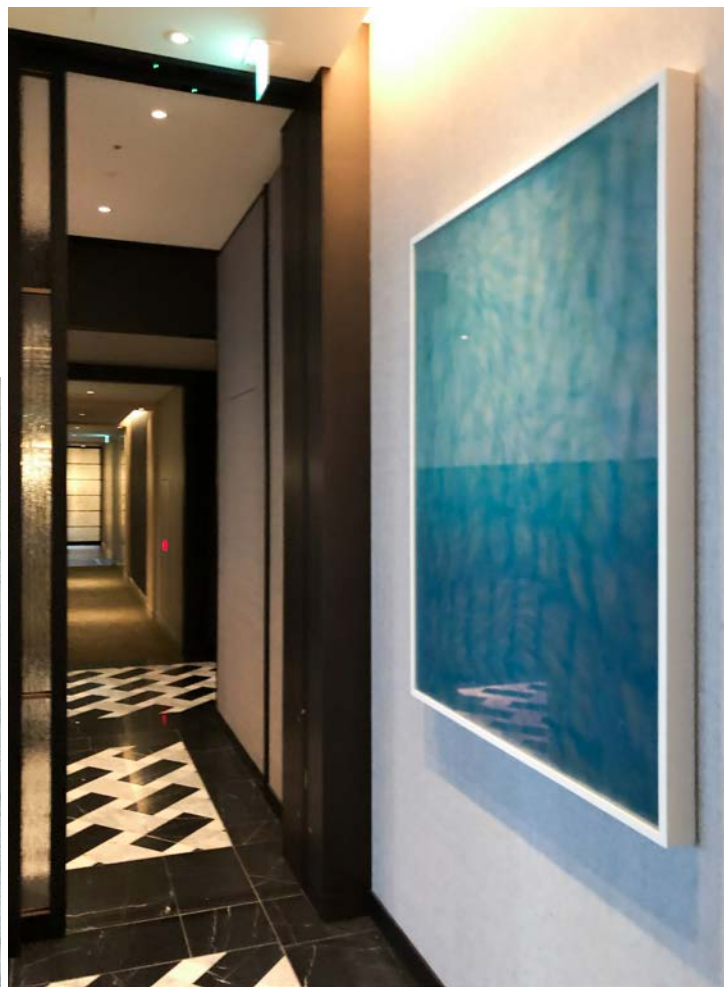
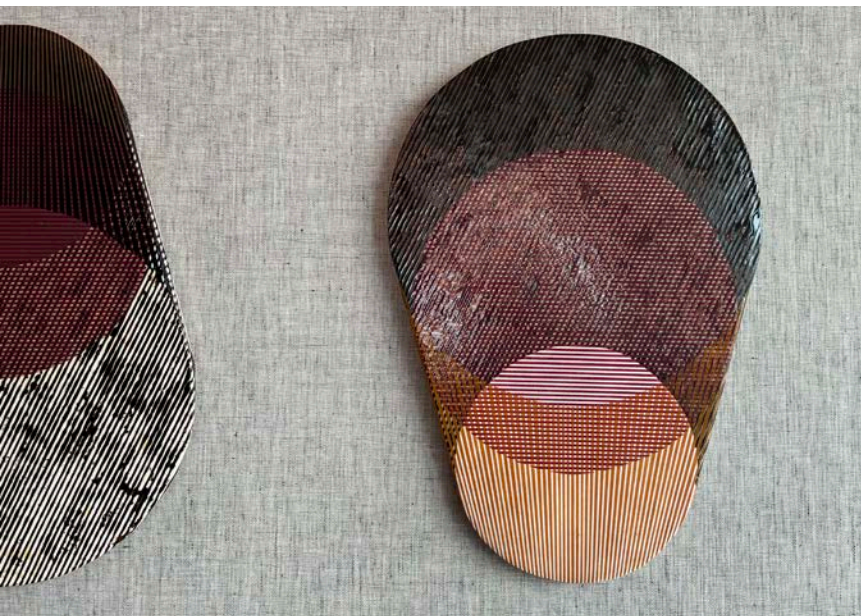




42F Fairmont Gold Lounge

Artworks woven with colorful threads dyed using plant-based pigments. Handcrafts made from layers of overlapping mesh. Enamel paintings built up through repeated glazing and overglaze firing.

— A celebration of layered color.

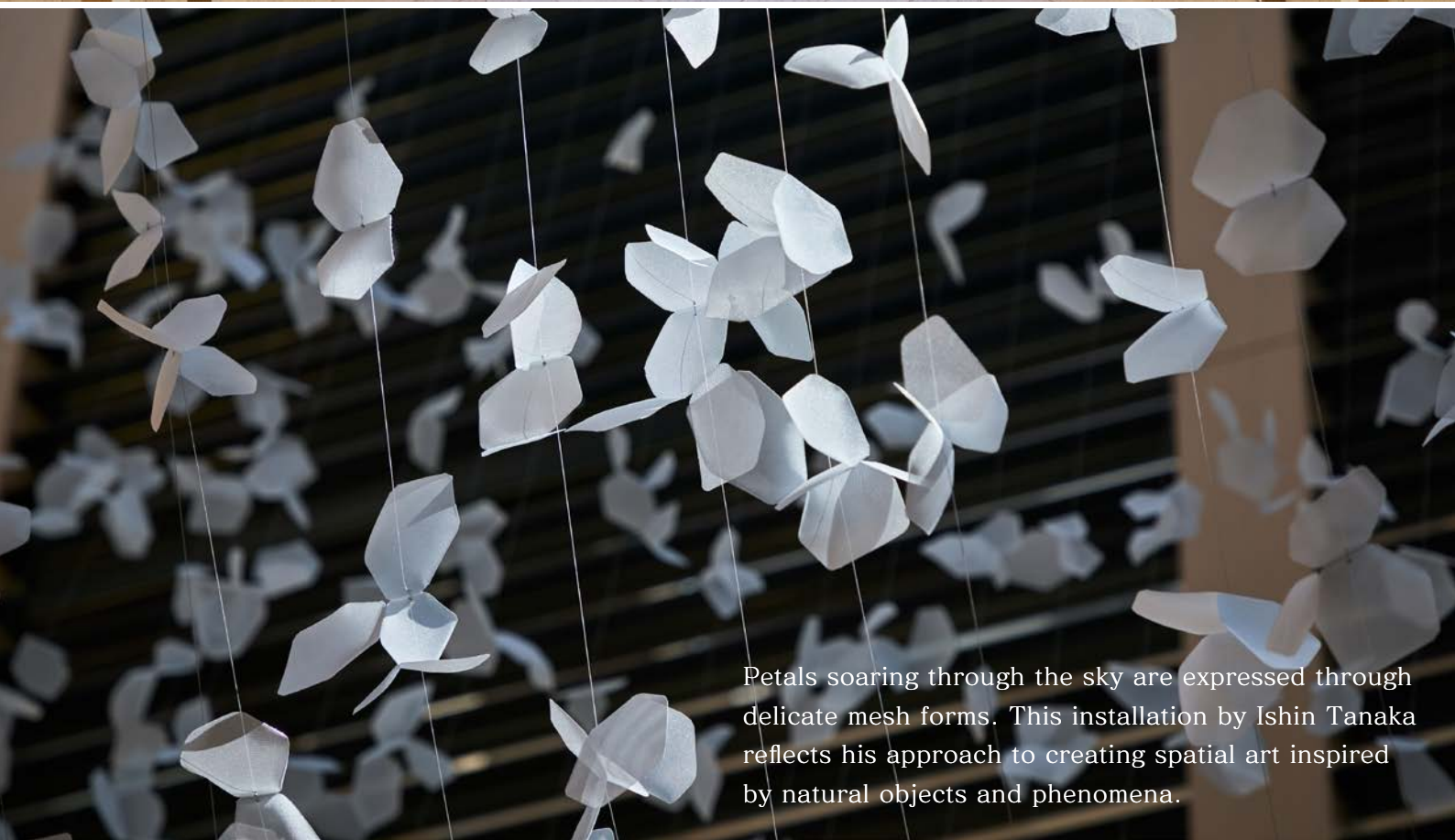




43F Chapel

In the chapel, petals appear to rise into the sky. In the banquet hall, a large watercolor painting captures delicate weeping plum blossoms made of paper and petals drifting on the water's surface.

—These artworks capture a sense of hope, prayer, and transcendence. This space creates quiet, emotional, graceful and memorable setting for guests on their ceremonial occasion.

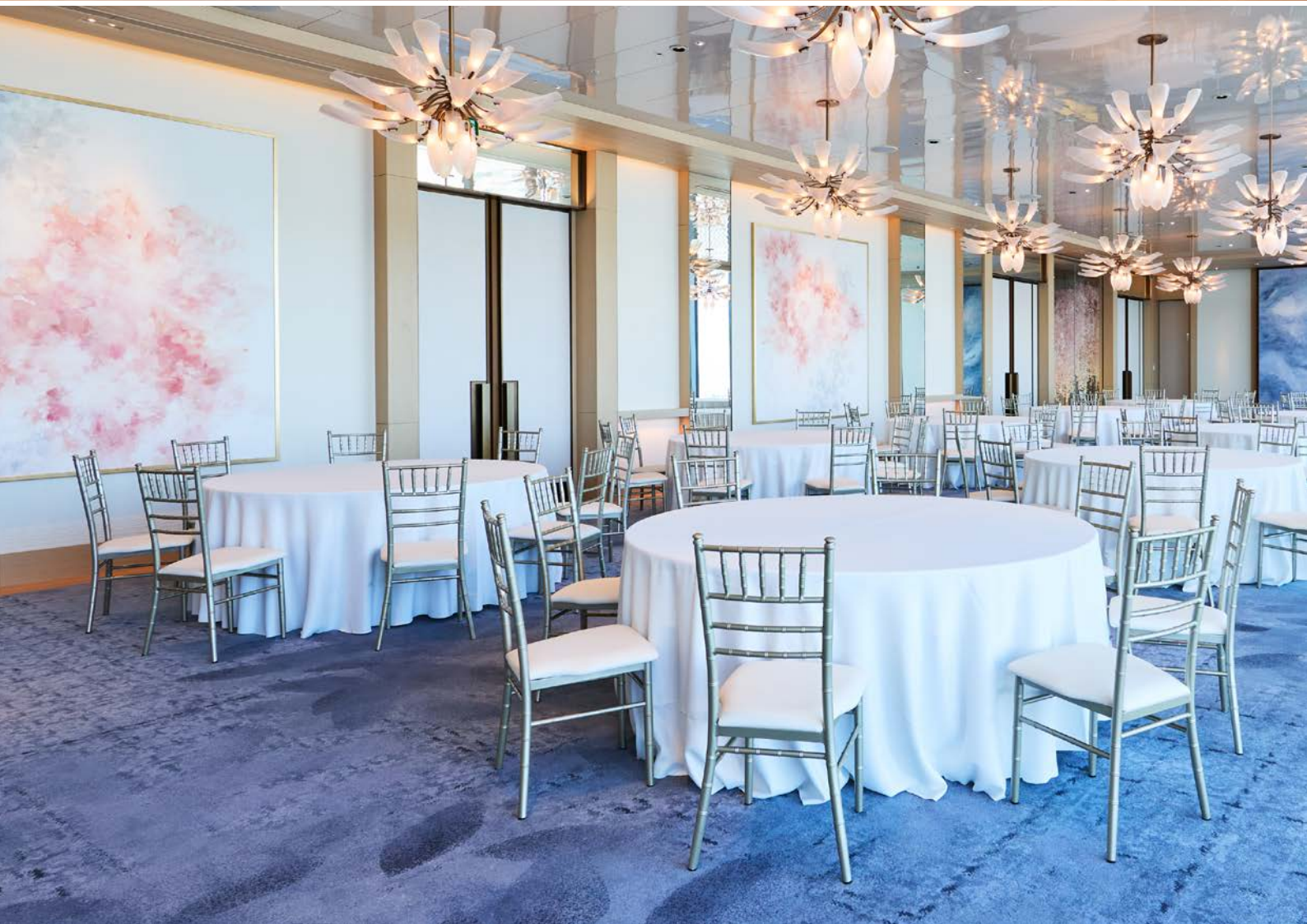


Petals soaring through the sky are expressed through delicate mesh forms. This installation by Ishin Tanaka reflects his approach to creating spatial art inspired by natural objects and phenomena.



A paper installation featuring weeping plum blossoms by Wanda Barcelona — the same artist behind the piece on the 4th floor.







43F Specialty Bars & Restaurant

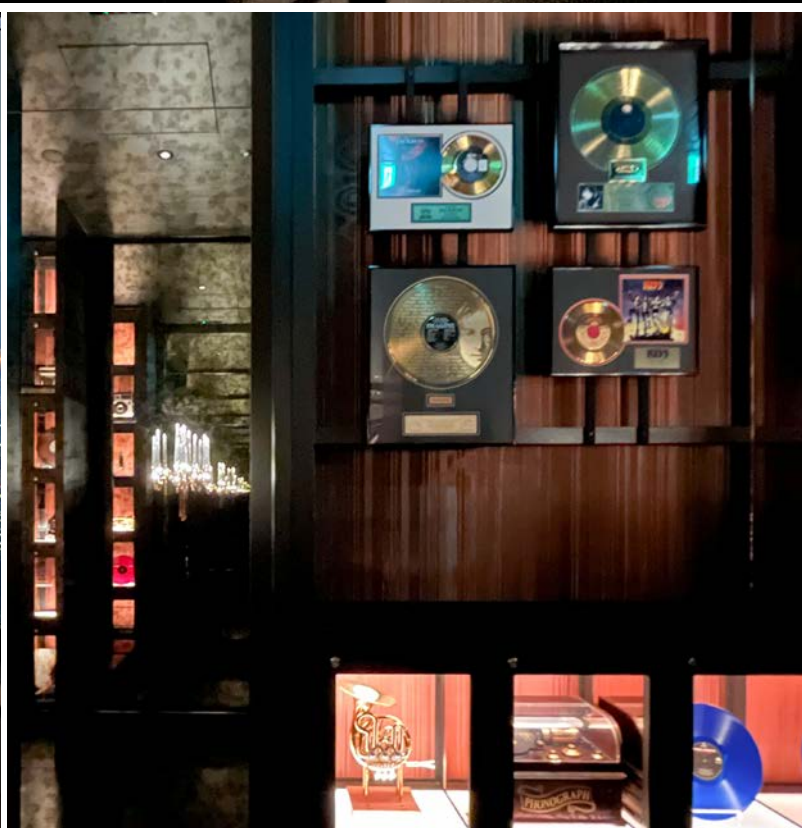
Passing through a luminous wall with moiré patterns that evoke the quiet sound of Shibaura's sea, a journey through music and time begins. Centered around the theme of sound, this hidden social hub in Tokyo's Shibaura brings together diverse people and cultures.





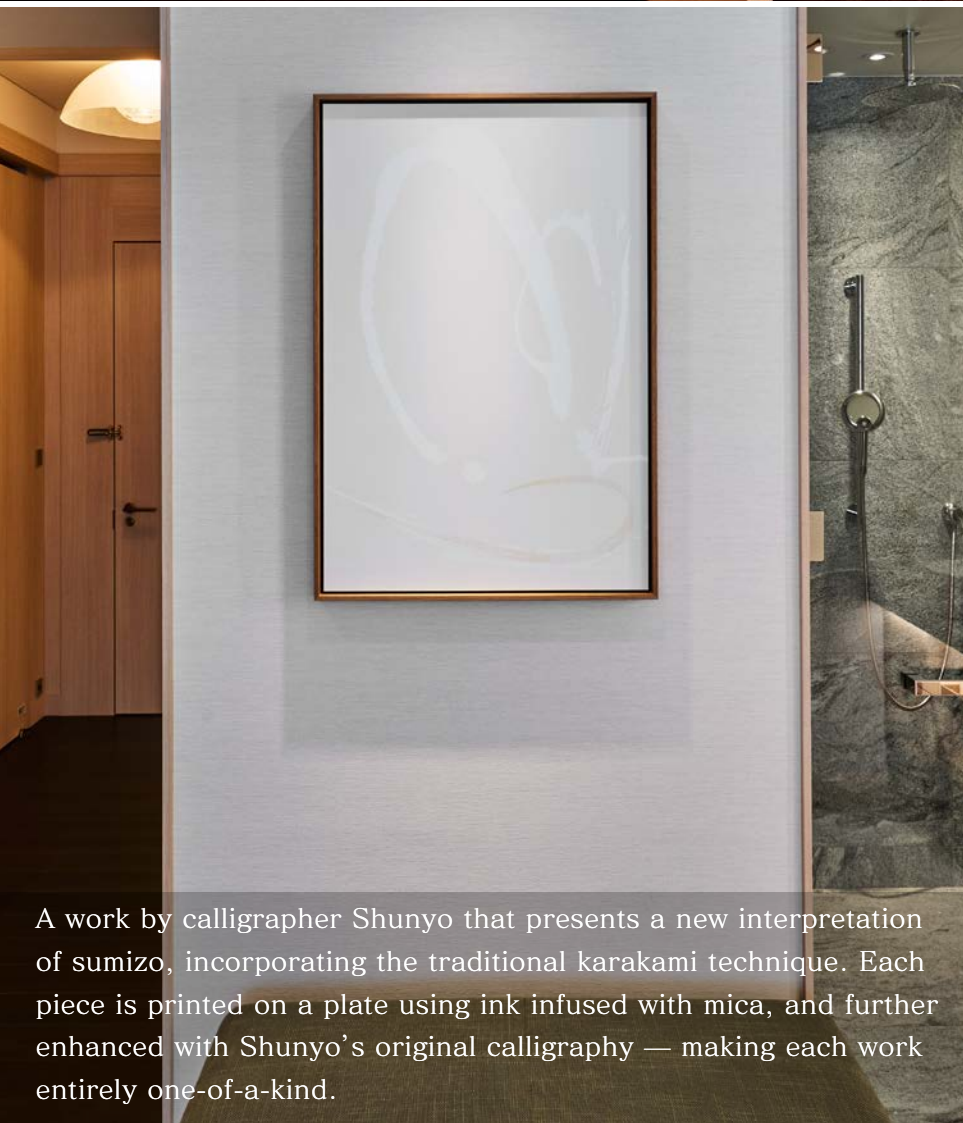
Bar / OFF RECORD

A hidden listening bar quietly tucked away in a corner of the 43rd floor — a secret space adorned with vintage guitars, gold records, and a curated collection of music memorabilia.



Guest Rooms

In the guest rooms, traditional Japanese techniques—such as calligraphy and woodblock-printed karakami paper—are used alongside contemporary, refined artworks, subtly infusing the luxurious interiors with a touch of Japanese essence.



A work by calligrapher Shunyo that presents a new interpretation of sumizo, incorporating the traditional karakami technique. Each piece is printed on a plate using ink infused with mica, and further enhanced with Shunyo's original calligraphy — making each work entirely one-of-a-kind.



The soft, flowing beauty of kuzushiji—Japanese cursive script—finds new form in the work of Saori Kunihiro, who transforms calligraphy into contemporary abstract expression.



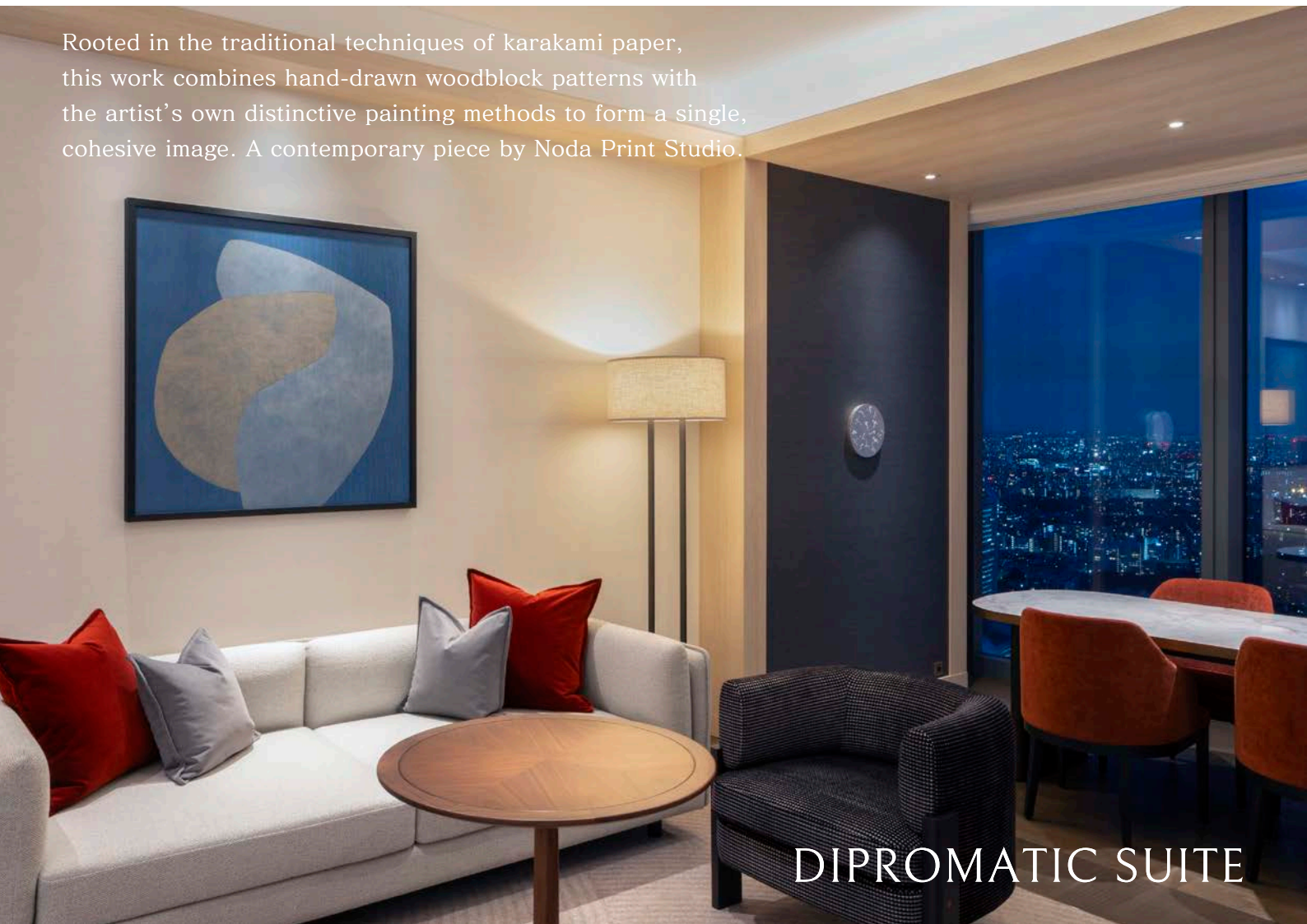
SIGNATURE KING





FAIRMONT GOLD SUITE

Rooted in the traditional techniques of karakami paper, this work combines hand-drawn woodblock patterns with the artist's own distinctive painting methods to form a single, cohesive image. A contemporary piece by Noda Print Studio.



DIPROMATIC SUITE



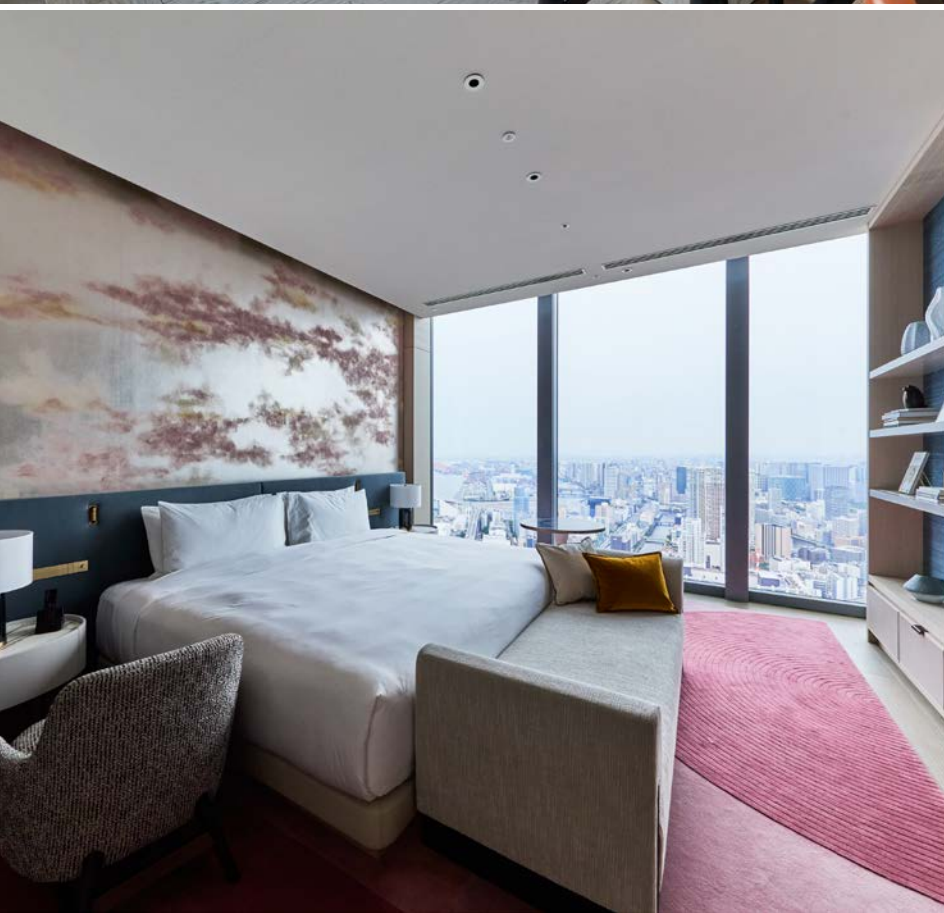
PRESIDENTIAL SUITE



Guided by natural forms, Rina Kotani employs the technique of pointillism to explore the ambiguity of perception and the fluid boundaries that define shape. Her works are created using a meticulous technique.



SHIBAURA SUITE



Project Data

Project Name
FAIRMONT TOKYO

Location
BLUE FRONT SHIBAURA TOWER S,
1-1-1 Shibaura Minato-ku, Tokyo, JAPAN

Opened
1st July 2025

Developers
Nomura Real Estate Development Co., Ltd.

Interior Design
BAR Studio (Public, Guest rooms)
NOMURA Co., Ltd. A.N.D. (Japanese
Restaurants)

ICA WORK SCOPE
Consultancy: Artwork Proposal & Planning.
Management & Design Production: Design,
Fabrication, Production Management,
Setting & Installation.

© Interculture Art Inc. All Rights Reserved.

About Us

Interculture Art Inc. (ICA)

Founded in 1994 in Tokyo, Interculture Art Inc. is an innovative leading company specializing in art and spatial design consultancy and production. The company strongly believes in the value of harmony between art and space. This "interculturality" between the two enriches our lives, where creativity and the stories embedded in spaces continue to resonate in our minds. Our team of specialists provides expertise in consulting, art, design, production, and installation. Over the years, we have established a comprehensive and multifaceted business model within the industry, offering art consulting for hotels, residences, healthcare facilities, commercial spaces, urban redevelopment projects and more.

We prioritize the uniqueness of each project, tailoring our programs to meet clients' needs, budgets, and schedules, while delivering exceptional results through creativity and innovation.

Our Philosophy

*"Interculturality between art and culture,
or the fusion of art with space,
creates our bountiful life.*

*Creativity and the stories we weave within spaces
continue to live in our minds, resonating far into the future."*

Head Office:

ICA Building

560-2 Waseda Tsurumakicho

Shinjuku, Tokyo 162-0041, JAPAN

<https://intercultureart.com/>

Contact Us / For Domestic and International Inquiries:

Email: inquiry@intercultureart.com

Telephone: +81-(0)3-3207-3911